



Behind the Scenes Scaling ChatGPT

Evan Morikawa
@e0m









Mike Heaton  9 months ago

Gonna run the load test with 1000 tokens,
we'll see slowness for a bit

 1  1 

2 replies

Mike Heaton  9 months ago

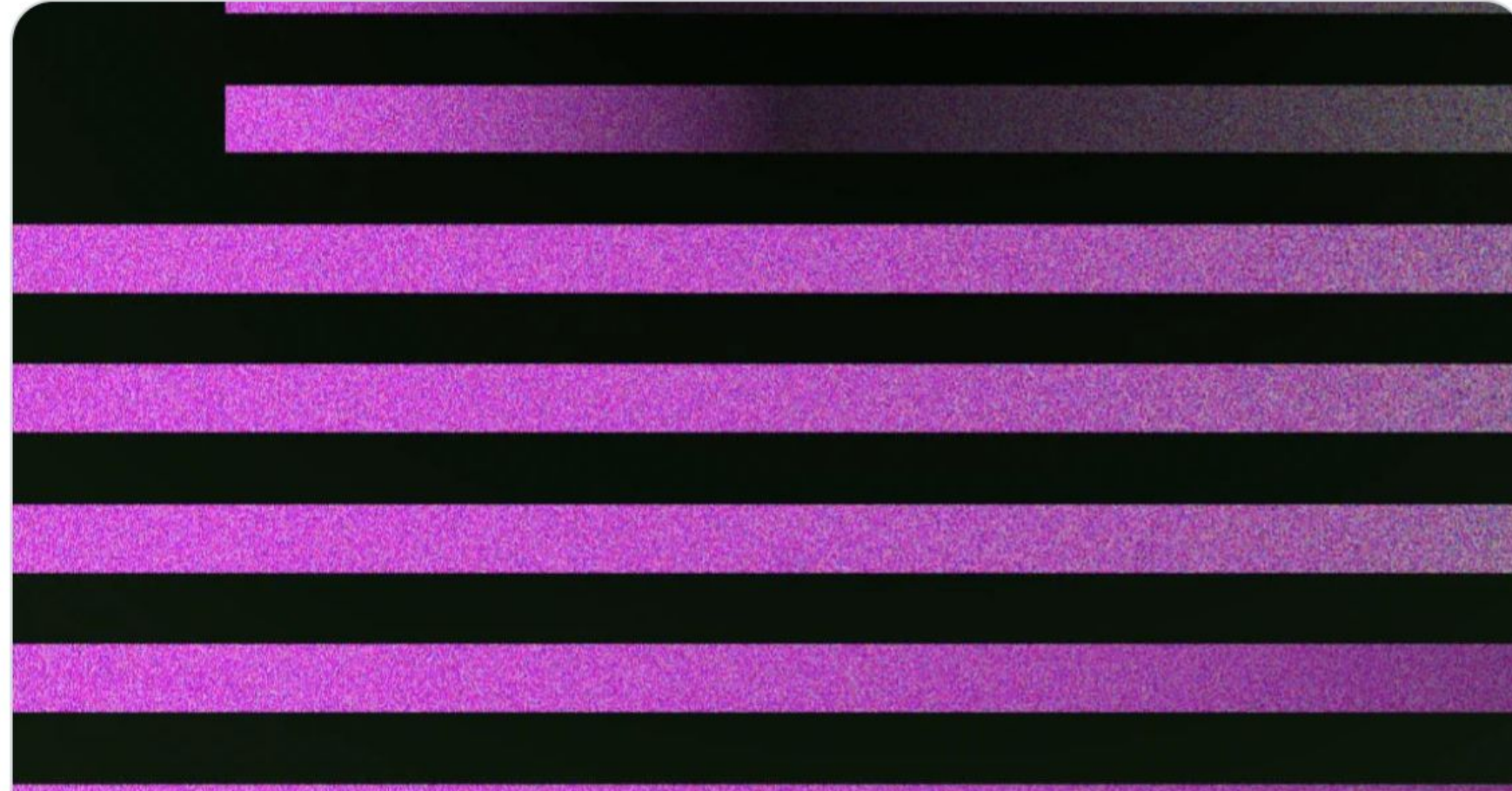
done!



OpenAI 
@OpenAI



Try talking with ChatGPT, our new AI system which is optimized for dialogue. Your feedback will help us improve it.



openai.com

Introducing ChatGPT

We've trained a model called ChatGPT which interacts in a conversational way. The dialogue format makes it possible for ChatGPT to answer followup ...

10:02 AM · Nov 30, 2022

3,437 Reposts **955** Quotes **13.4K** Likes **1,477** Bookmarks

14:10 **Adam Perelman** Utilization still steadily growing...at 35% now, worth keeping an eye on

image.png ▼



Evan Morikawa  9 months ago

Looks like we peaked today at ~ [tok/min](#), which is ~40% utilization of our GPUs. In 1 day this roughly tied as the most used model in our system.

 14  5 

2 replies

#← Also sent to the channel

Adam Perelman 9 months ago

shoutout to [@hallacy](#) and [@peterh](#) for some excellent capacity planning math!!! getting even the order-of-magnitude right for these forecasts is so hard given lots of sources of uncertainty getting multiplied together. awesome that we ended up in the safe zone, without being wildly overprovisioned.

 10  1 

Stories from November 30, 2022

Go back a [day](#), [month](#), or [year](#). Go forward a [day](#) or [month](#).

1. ▲ **Show HN: Trading cards made with e-ink displays** ([wyldcard.io](#))
1149 points by jonahss 9 months ago | [hide](#) | 291 comments
2. ▲ **Inkbase: Programmable Ink** ([inkandswitch.com](#))
675 points by infinite8s 9 months ago | [hide](#) | 83 comments
3. ▲ **The last three years of my work will be permanently abandoned** ([ericlippert.com](#))
707 points by chubot 9 months ago | [hide](#) | 460 comments
4. ▲ **Convert SimCity 2000 cities into Minecraft worlds** ([github.com/jgosar](#))
658 points by notpushkin 9 months ago | [hide](#) | 149 comments
5. ▲ **OpenAI ChatGPT: Optimizing language models for dialogue** ([openai.com](#))
408 points by amrrs 9 months ago | [hide](#) | 232 comments
6. ▲ **Building arbitrary Life patterns in 15 gliders** ([mybluehost.me](#))
510 points by mikro2nd 9 months ago | [hide](#) | 112 comments
7. ▲ **Huawei phones automatically deleting videos of the protests?** ([twitter.com/msmelchen](#))
743 points by qwertyuiop_ 9 months ago | [hide](#) | 512 comments

A vintage-style poster with a dark, textured background. The text is rendered in a neon-like, glowing font. The words are arranged in three lines: "LOW-KEY" in cyan, "RESEARCH" in magenta, and "PREVIEW" in yellow. The "PREVIEW" text is slanted upwards to the right. The background features a central starburst pattern of light rays in shades of red, orange, and yellow, radiating from behind the text. The entire poster is framed by a thin, light-colored border.

LOW-KEY
RESEARCH
PREVIEW

04:09 **PagerDuty** APP

Resolved: #46728 Conversation latency is too high!

Assigned: chat.openai.com **Triggered by:** Datadog

↓ Low Urgency

Service: chat.openai.com

✓ Resolved by Datadog | Dec 1st, 2022



3 replies Last reply 9 months ago

04:20 **Arun Vijayvergiya** replied to a thread: **Usage still climbin...**

Japan is now loving us more than the US did. This trajectory is not sustainable with current capacity.

Screenshot 2022-12-01 at 4.20.11 AM.png ▾



08:59 **Sherwin Wu** 🌴 oh no an elon tweet...

https://twitter.com/elonmusk/status/1598360883474108417?s=46&t=N7gDEQU1yH_yhCY5NHPQ-A

 **Elon Musk** @elonmusk



Lot of people stuck in a damn-that's-crazy ChatGPT loop 🔄

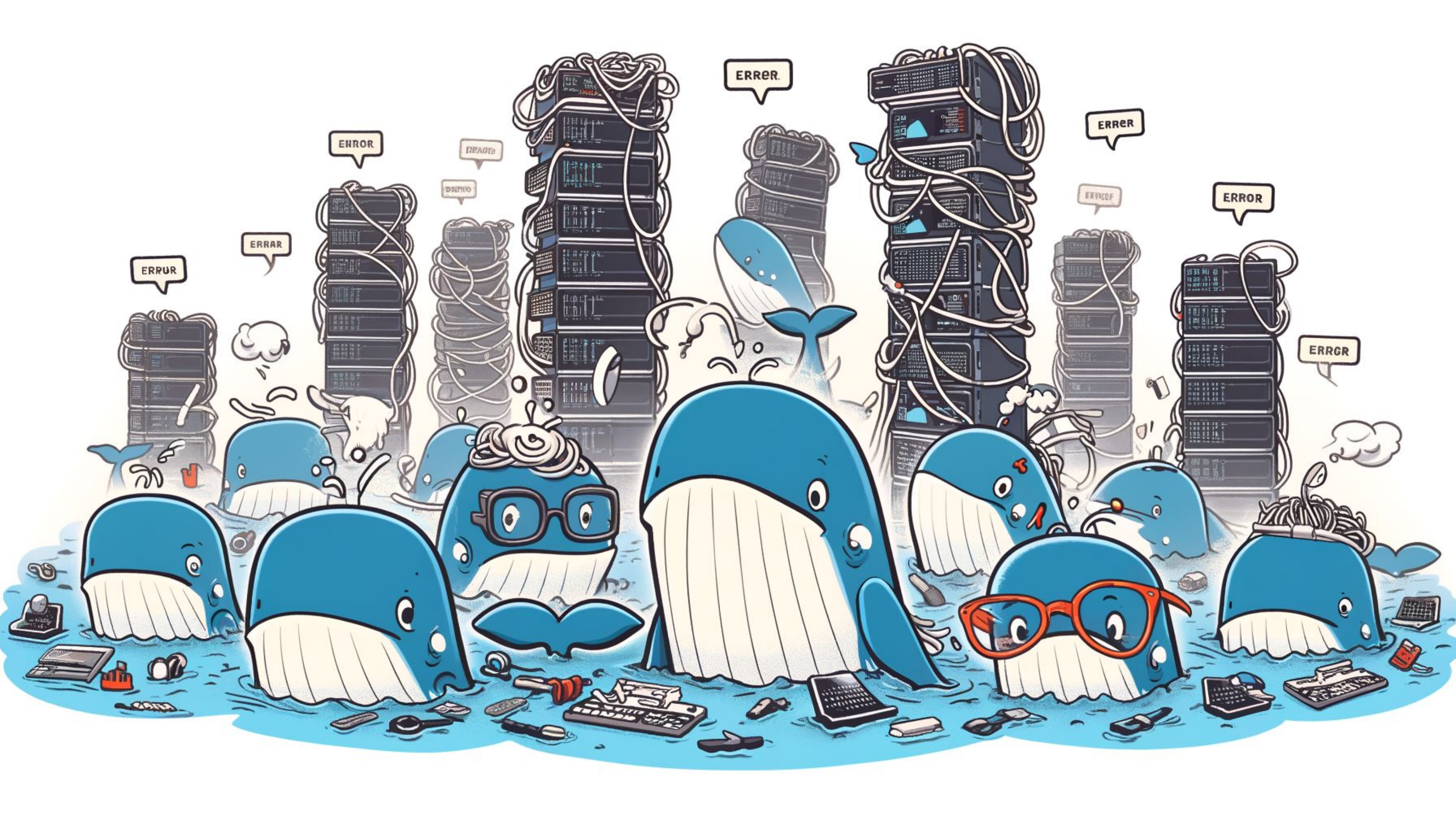
 Twitter | Dec 1st, 2022

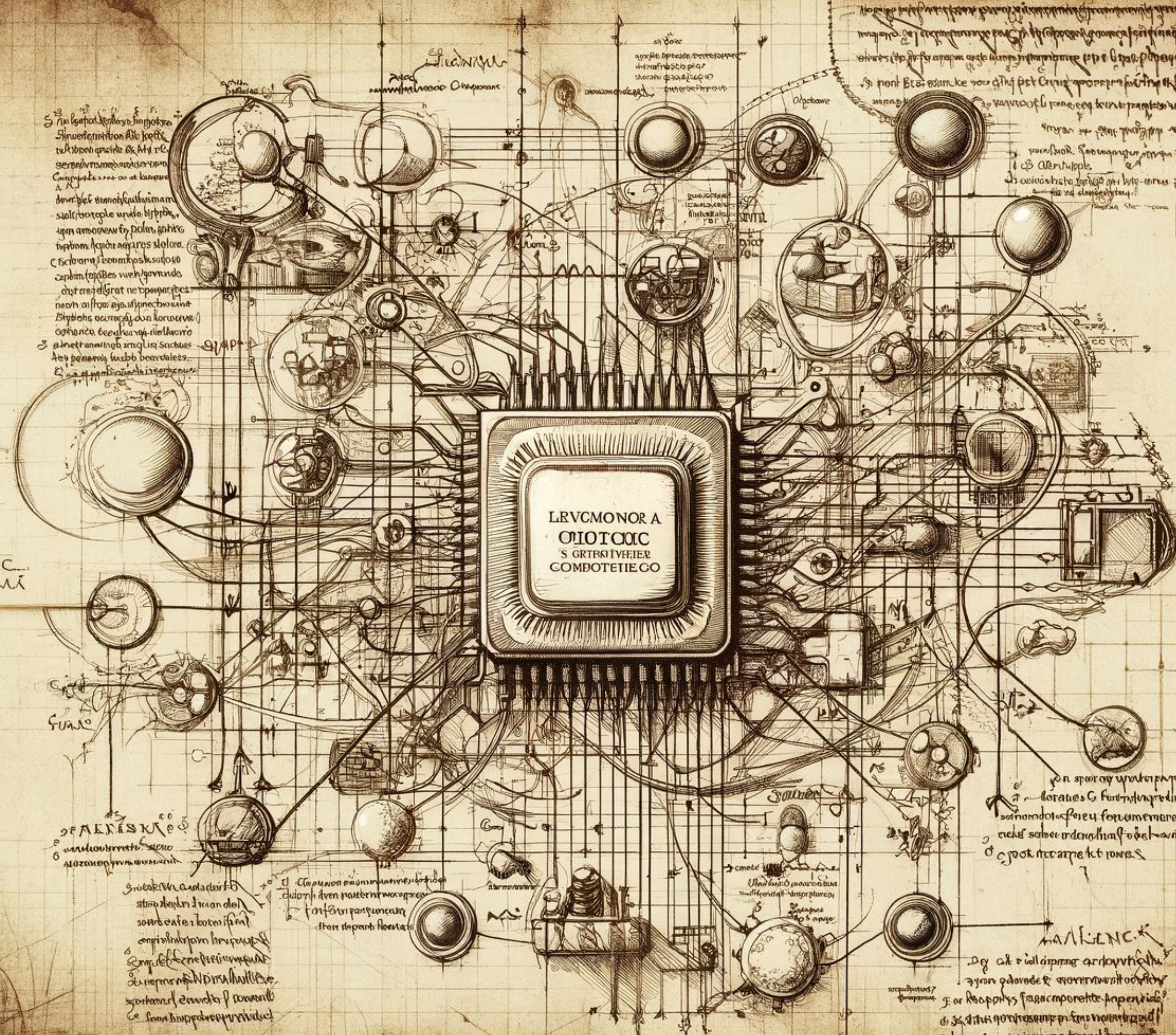




05:14 **Arun Vijayvergiya** replied to a thread: **Usage still climbin...**
okay, failwhale is about to go up shortly. please speak up
if there is a cavalry with more GPUs somewhere
[View newer replies](#)

05:23 **Arun Vijayvergiya** replied to a thread: **Usage still climbin...**
failwhale is now up
 
[View newer replies](#)





LRVCMONOR A
OIOTOC
S GRTRKI VEEIER
COMDOTETIE CO

Σιν λειπόμενα...
Αναμνηστικόν...
Κατασκευασθέν...
Από τον...
Επιχειρηματία...
Κατασκευαστή...
Από τον...
Επιχειρηματία...
Κατασκευαστή...
Από τον...
Επιχειρηματία...
Κατασκευαστή...

Μεταξύ...
Αναμνηστικόν...
Κατασκευασθέν...
Από τον...
Επιχειρηματία...
Κατασκευαστή...
Από τον...
Επιχειρηματία...
Κατασκευαστή...
Από τον...
Επιχειρηματία...
Κατασκευαστή...

Αναμνηστικόν
Κατασκευασθέν

Αναμνηστικόν
Κατασκευασθέν

Αναμνηστικόν
Κατασκευασθέν

Αναμνηστικόν
Κατασκευασθέν

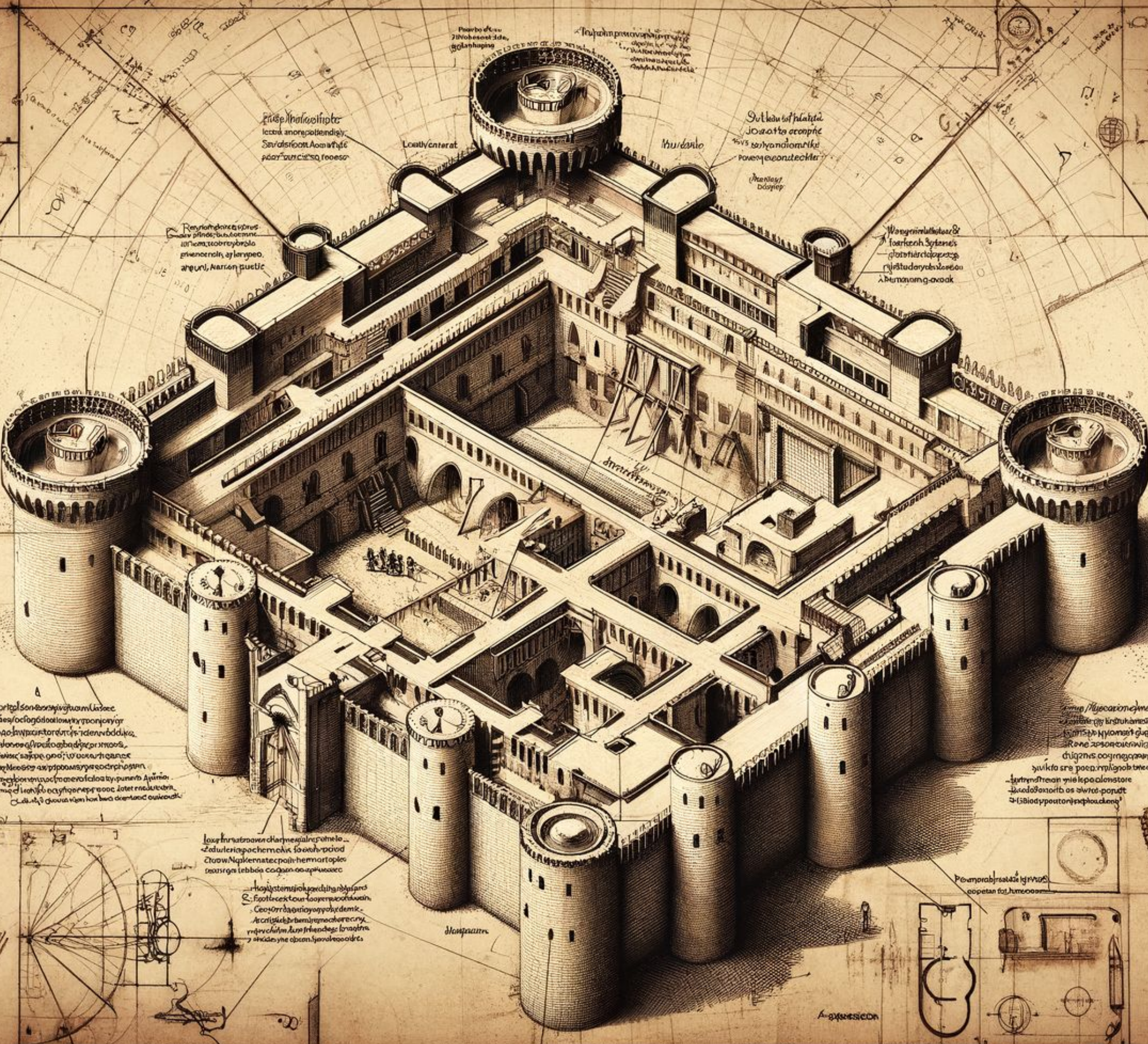
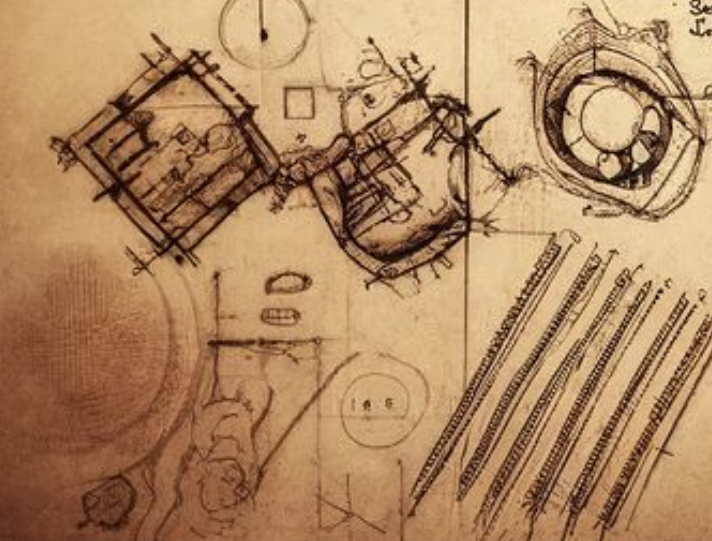
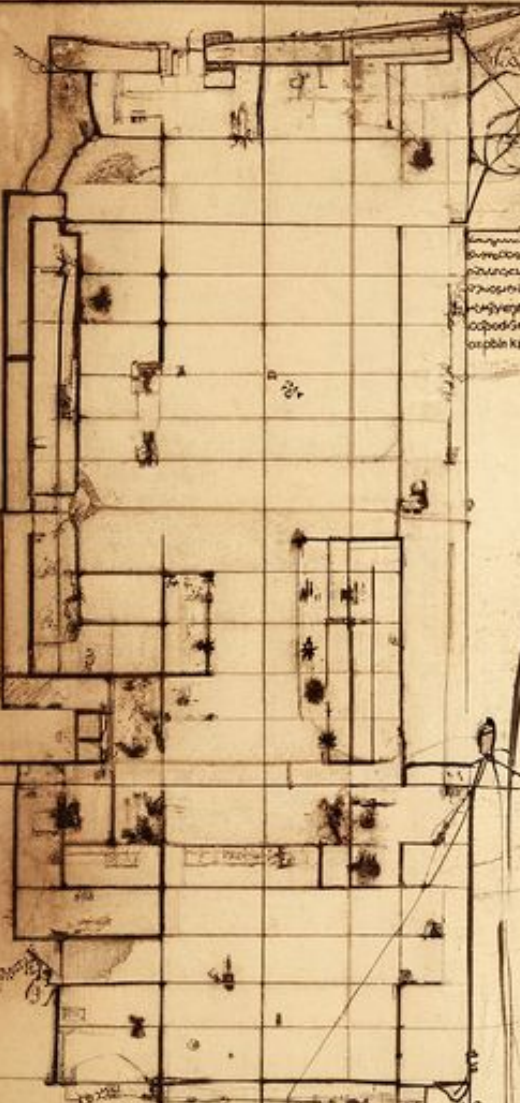
Αναμνηστικόν
Κατασκευασθέν

Αναμνηστικόν
Κατασκευασθέν

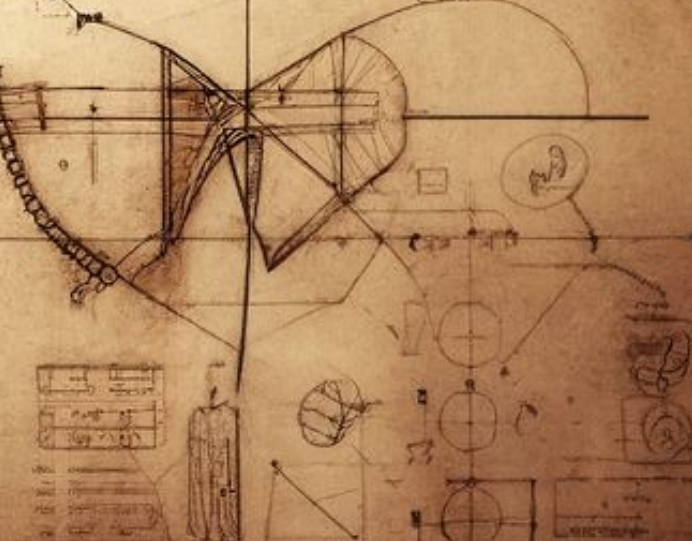
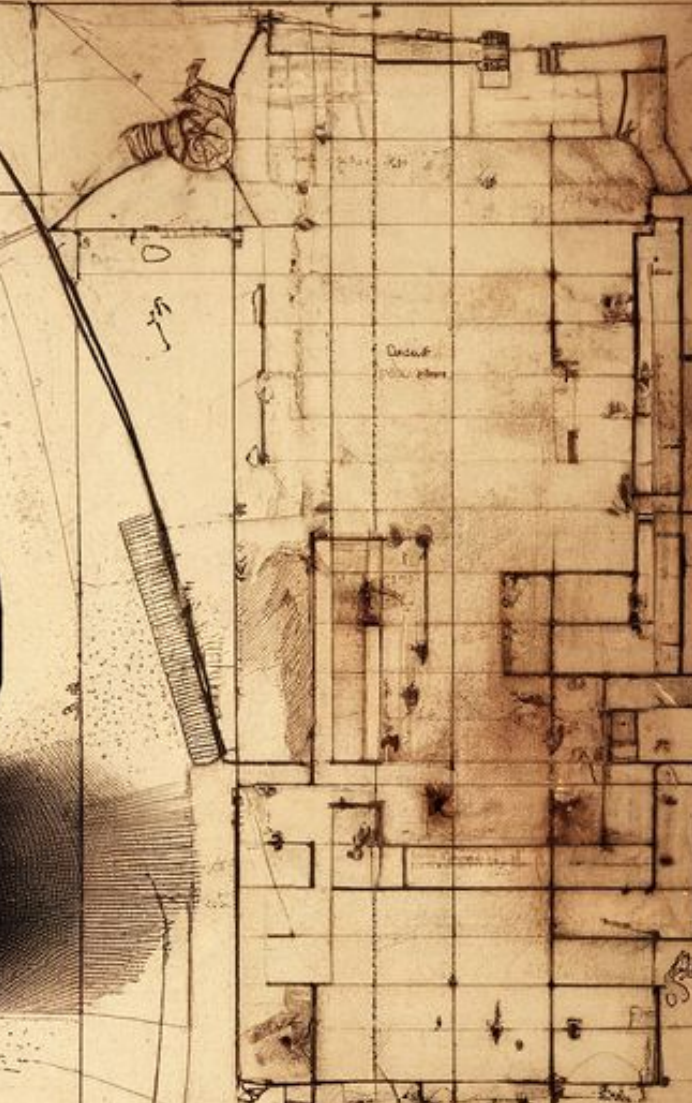




Handwritten text in the top left corner, likely a title or introductory notes.



Handwritten text in the top right corner, providing additional information or instructions related to the drawing.

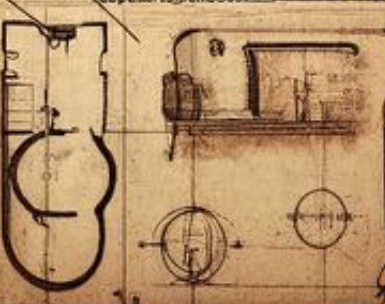


Handwritten text block located in the lower-left quadrant of the page, below the main drawing.

Handwritten text block located in the lower-center of the page, below the main drawing.

Handwritten text block located in the lower-right quadrant of the page, below the main drawing.

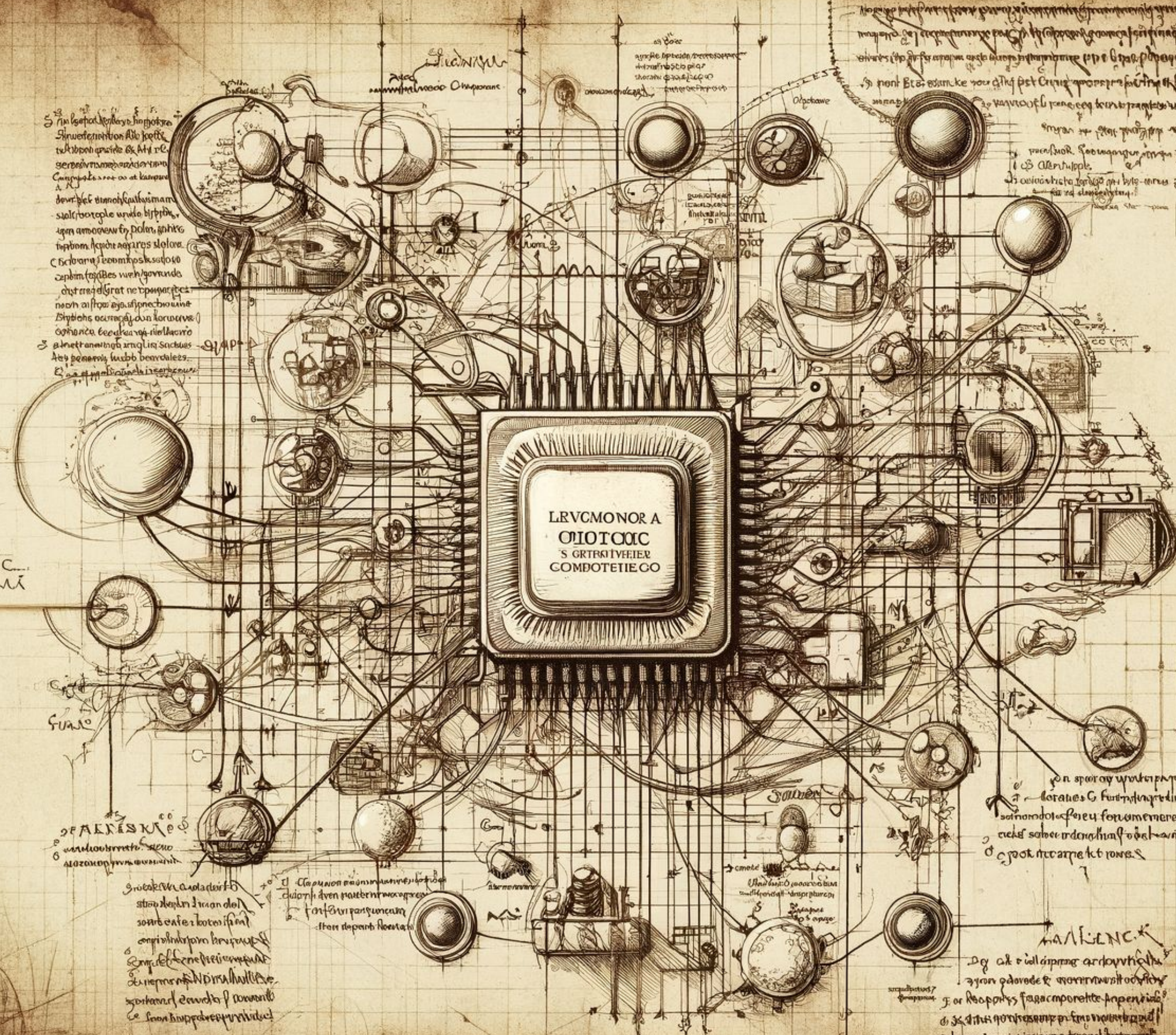
Small handwritten text block located near the bottom right of the main drawing.





Behind the Scenes Scaling ChatGPT

Evan Morikawa
@e0m



Si in leat...
Sine...
C...
S...
A...

Alavc
Lemli

DE AKKES...
S...

S...
S...
S...
S...

S...
S...
S...

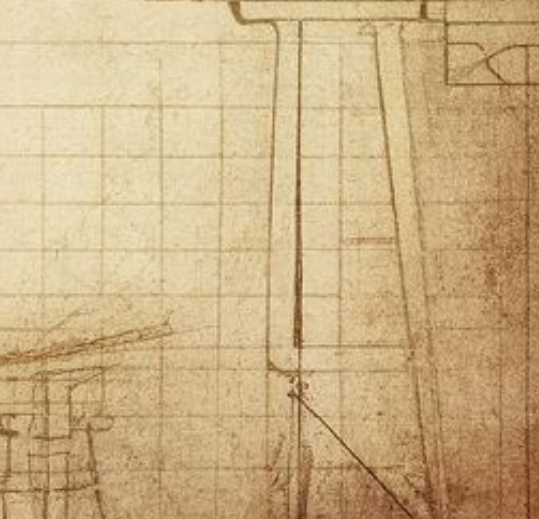
LRVCMONOR A
OIOIOOC
S GRTRKI VEEIER
COMDOTETIE CO

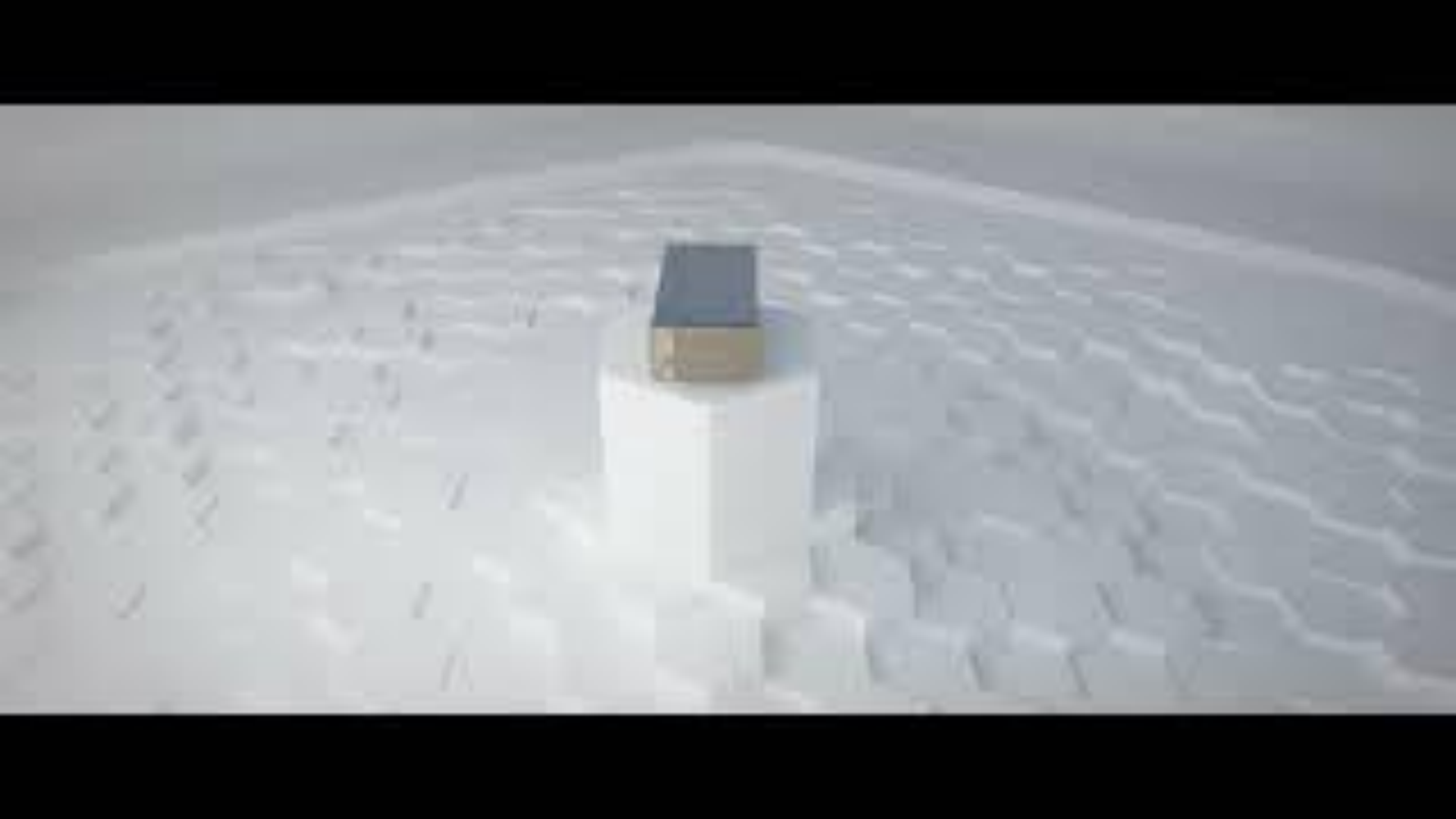
SALVEM
S...

S...
S...
S...

MALLIENCK
S...
S...
S...

Si in leat...
Sine...
C...
S...
A...







GPU RAM and KV Cache

Batch size & ops:bytes

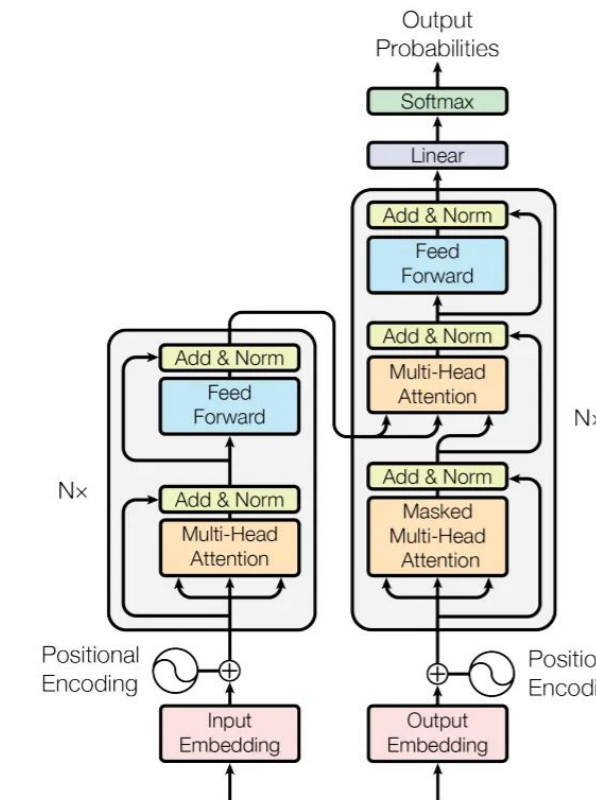
Scheduling in dozens of clusters

Autoscaling (and the lack thereof)

jumps

quick	brown	fox	jumps	over	the
quick	0.789	0.456	0.910	0.612	0.637
brown		0.002	0.013	0.201	0.071
fox			0.813	0.992	0.741
jumps				0.810	0.911
over					0.112

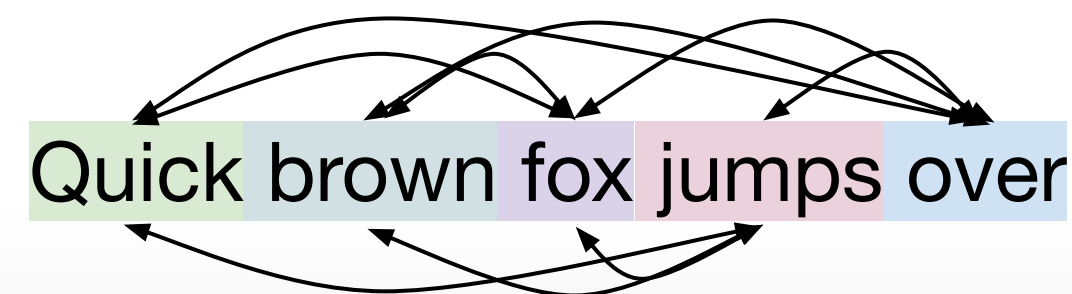
0.980 0.029 0.001 0.001 0.001



0.123 0.789 0.456 0.910 0.612

0.123 0.789 0.456 0.910 0.612

0.123 0.789 0.456 0.910 0.612



Quick brown fox



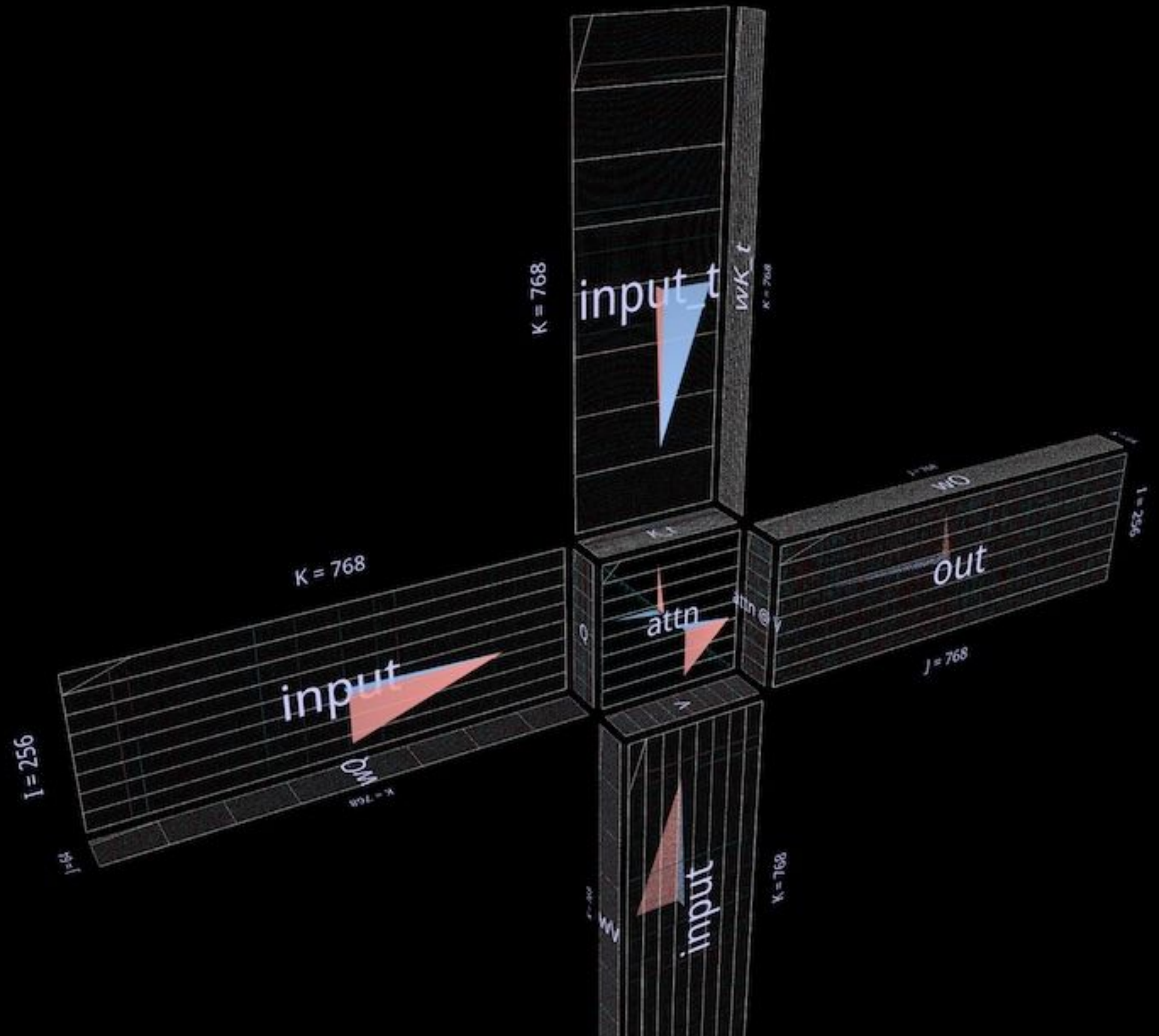
quick	brown	fox	jumps	over	the
quick	0.789	0.456	0.910	0.612	0.637
brown		0.002	0.013	0.201	0.071
fox			0.813	0.992	0.741
jumps				0.810	0.911
over					0.112

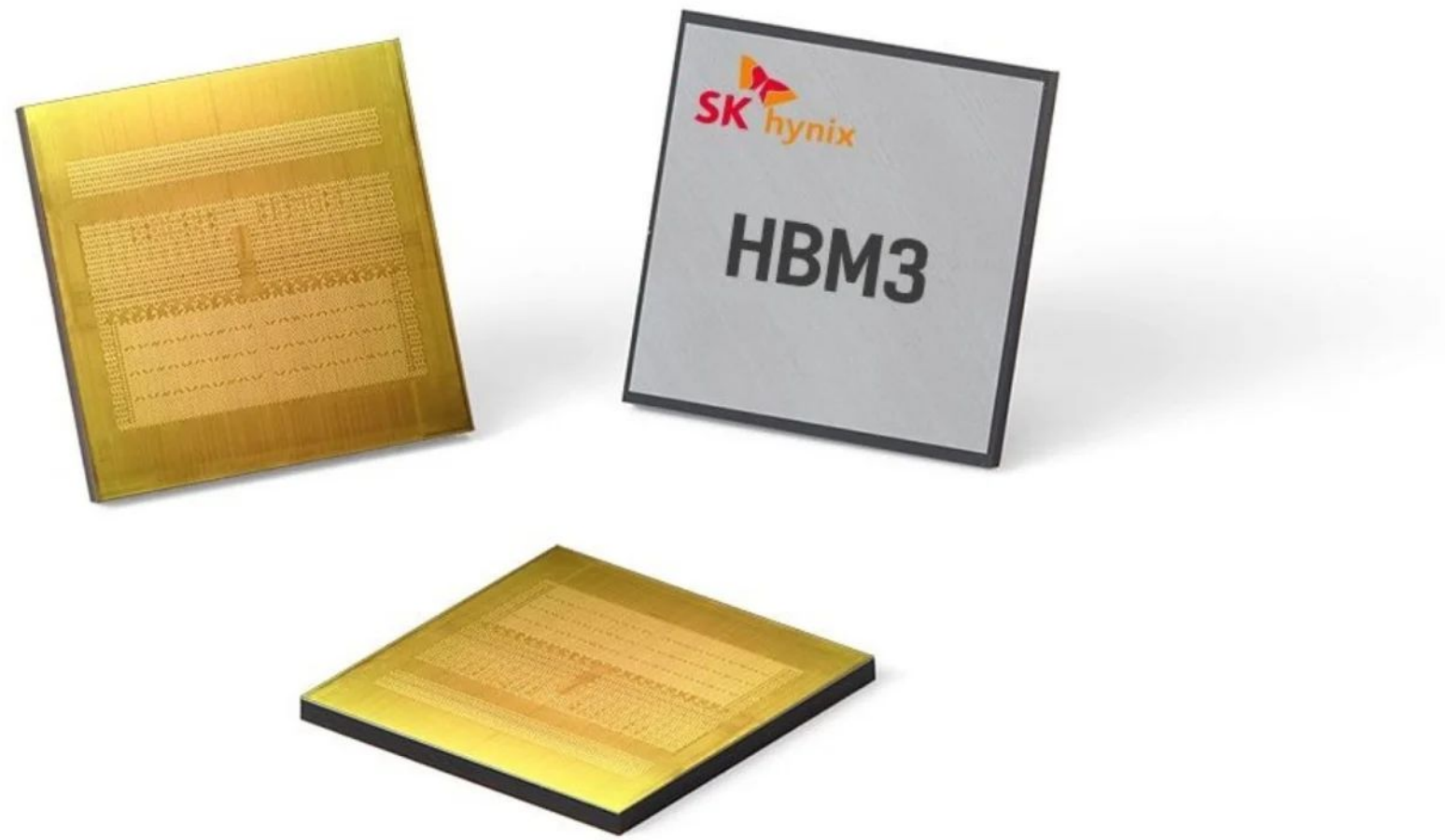
quick	brown	fox	jumps	over	the	lazy
quick	0.789	0.456	0.910	0.612	0.637	0.112
brown		0.002	0.013	0.201	0.071	0.813
fox			0.813	0.992	0.741	0.001
jumps				0.810	0.911	0.912
over					0.112	0.001
the						0.128

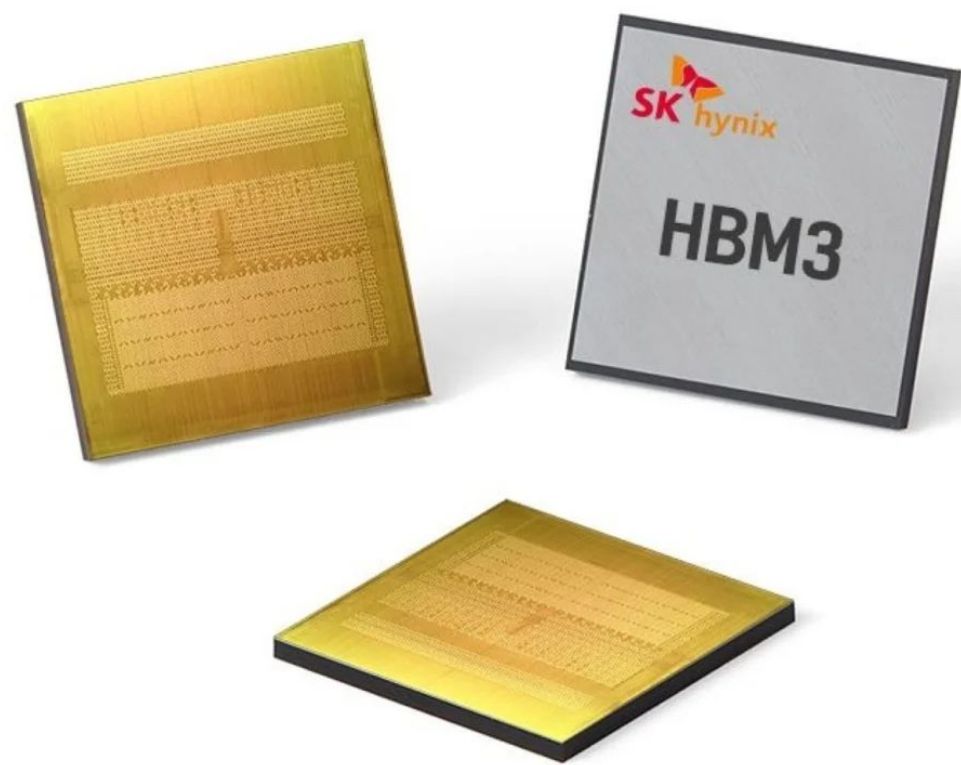
quick	brown	fox	jumps	over	the	lazy
quick	0.789	0.456	0.910	0.612	0.637	0.112
brown		0.002	0.013	0.201	0.071	0.813
fox			0.813	0.992	0.741	0.001
jumps				0.810	0.911	0.912
over					0.112	0.001
the						0.128

0.789	0.456	0.910	0.612	0.637
	0.002	0.013	0.201	0.071
		0.813	0.992	0.741
			0.810	0.911
				0.112

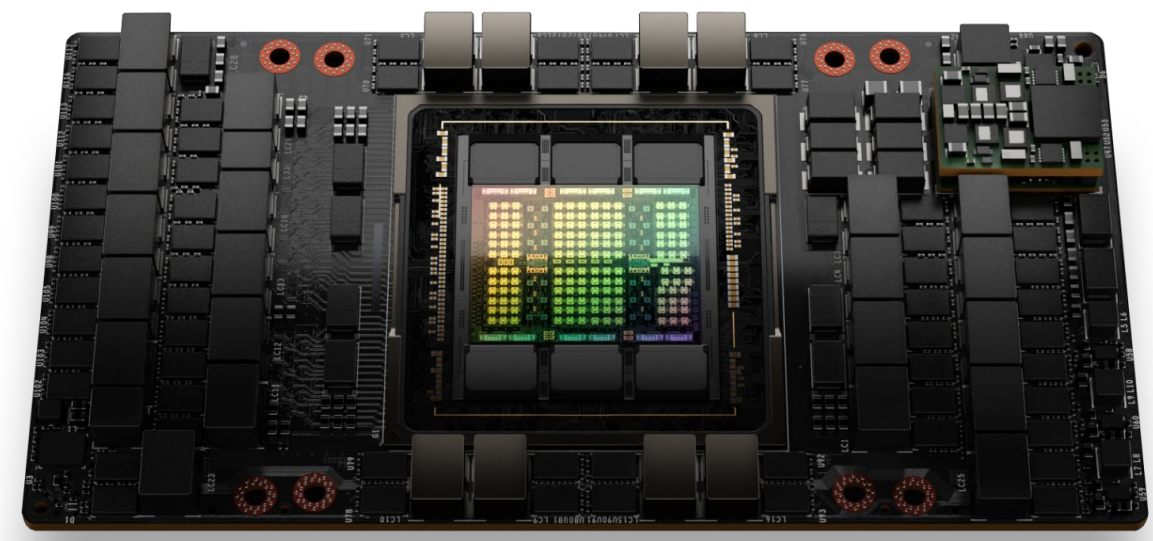
$$\text{out} = (\text{attn} = (Q = \text{input} @ w_Q) @ (K_t = w_{K_t} @ \text{input}_t)) @ (V = \text{input} @ w_V) @ w_O$$



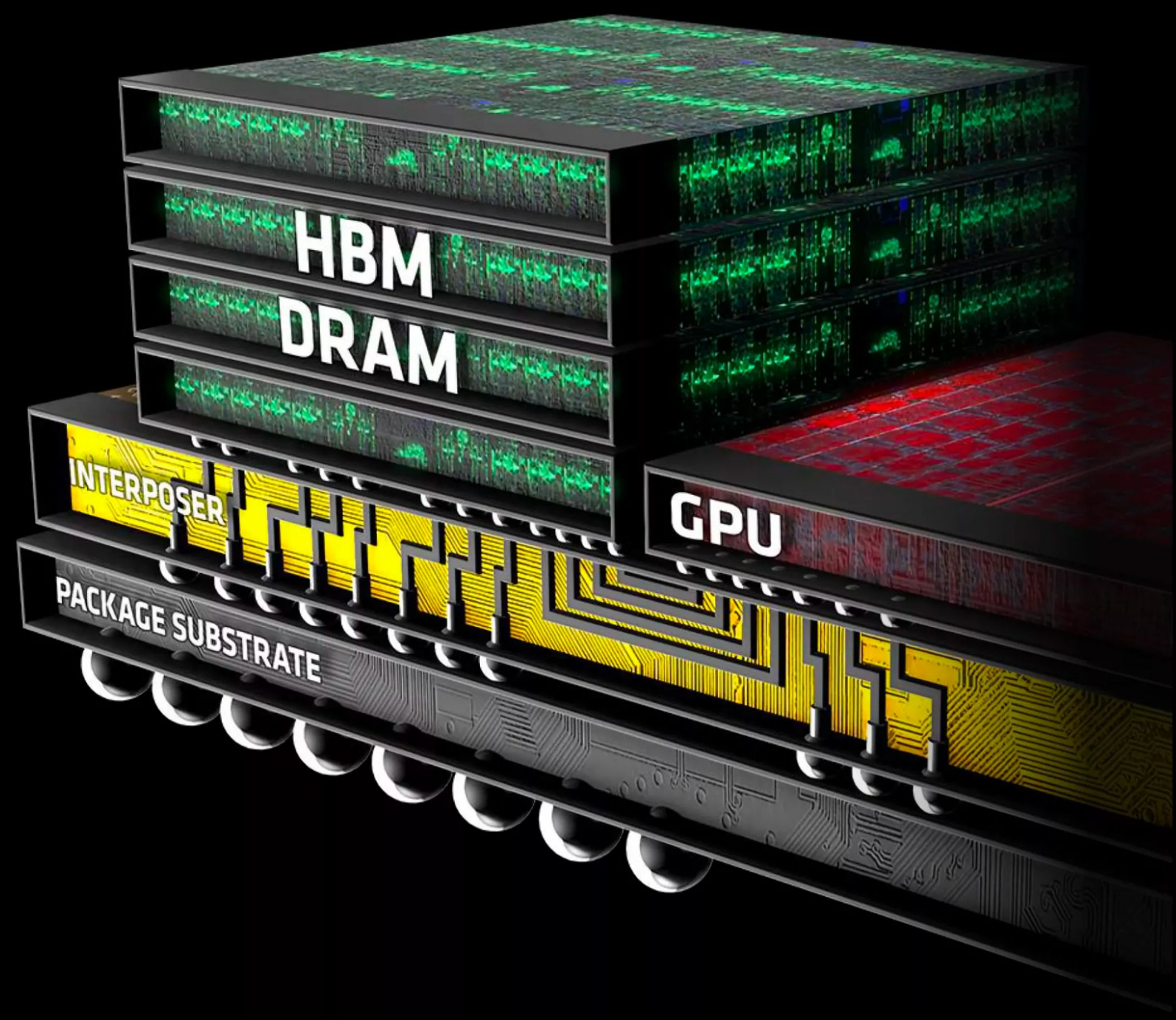


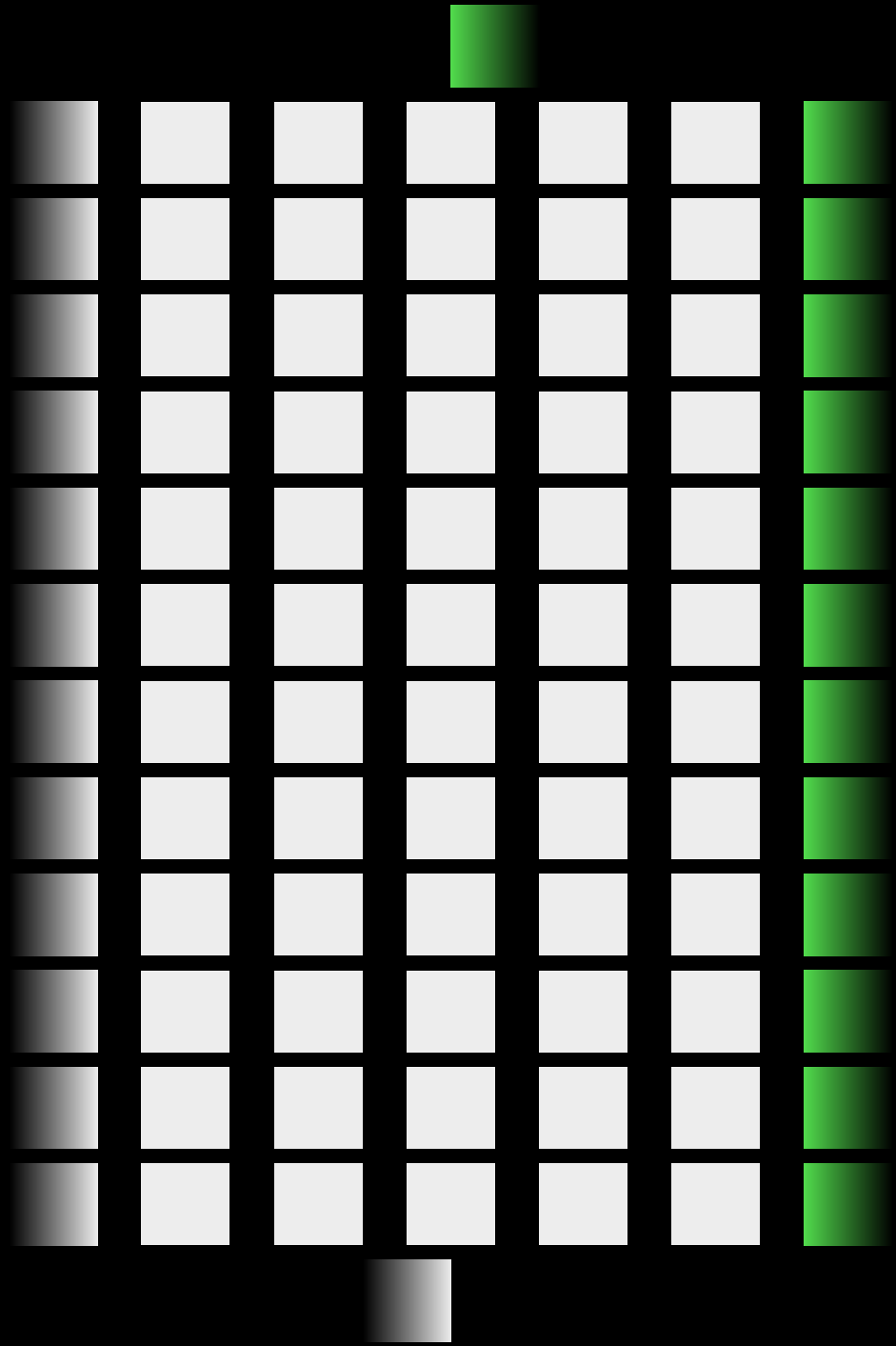


3352 GB/s



32 GB/s





GPU memory is valuable

It is a bottleneck

Cache misses are non linear on compute

"Utilization" isn't simple

KV Cache + Batch Size

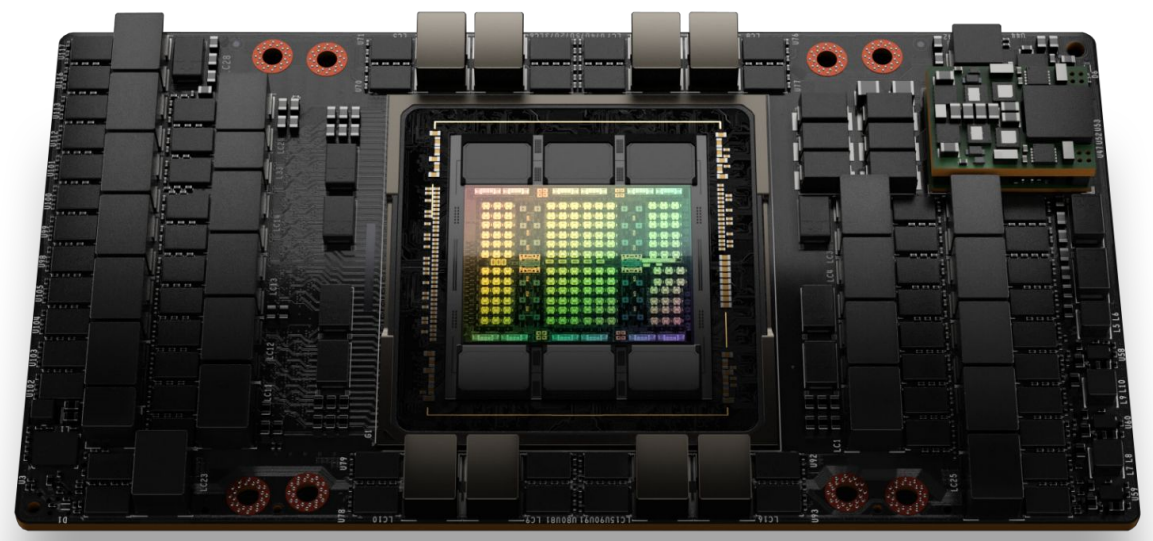
"Utilization" isn't simple

KV Cache + **Batch Size**

ic to balance when scaling ChatGPT is

Quick brown fox jumps

Four score and seven



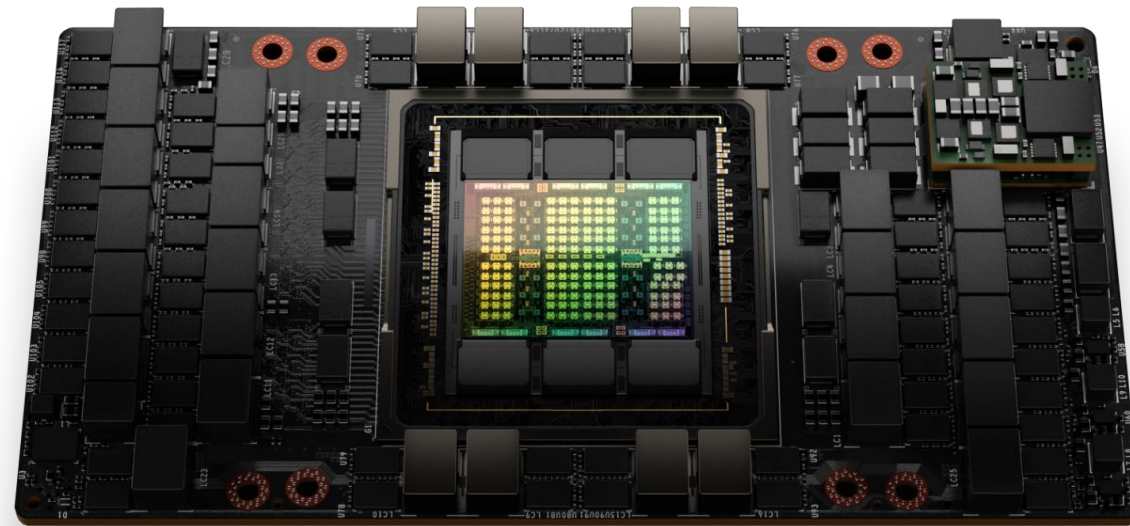
batch

over

years

1.98 PFLOP

3.35 TB



591:1
ops:byte

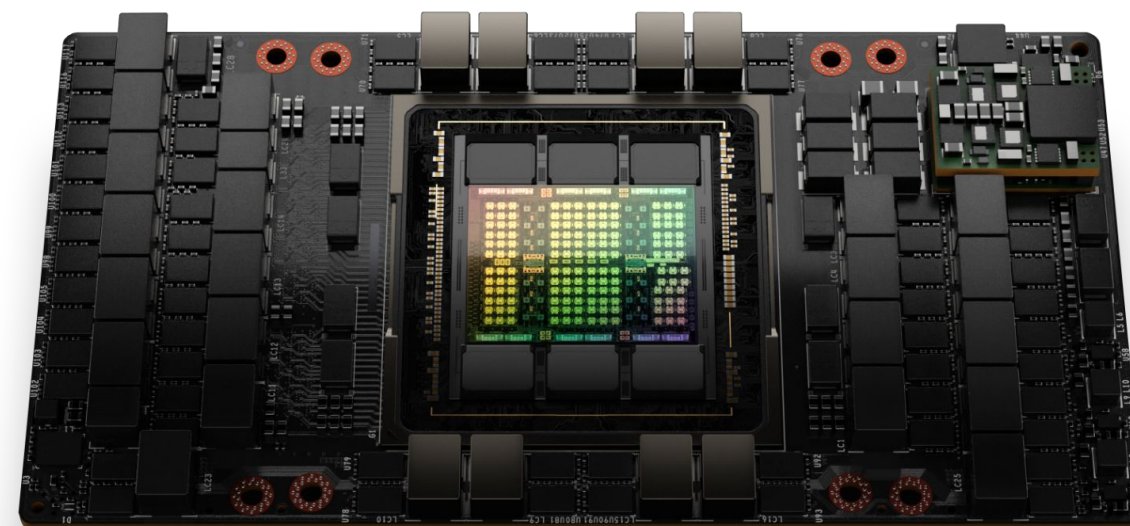
c to balance when scaling ChatGPT is

Quick brown fox jumps

Four score and seven

by changing our batch

we need to monitor our



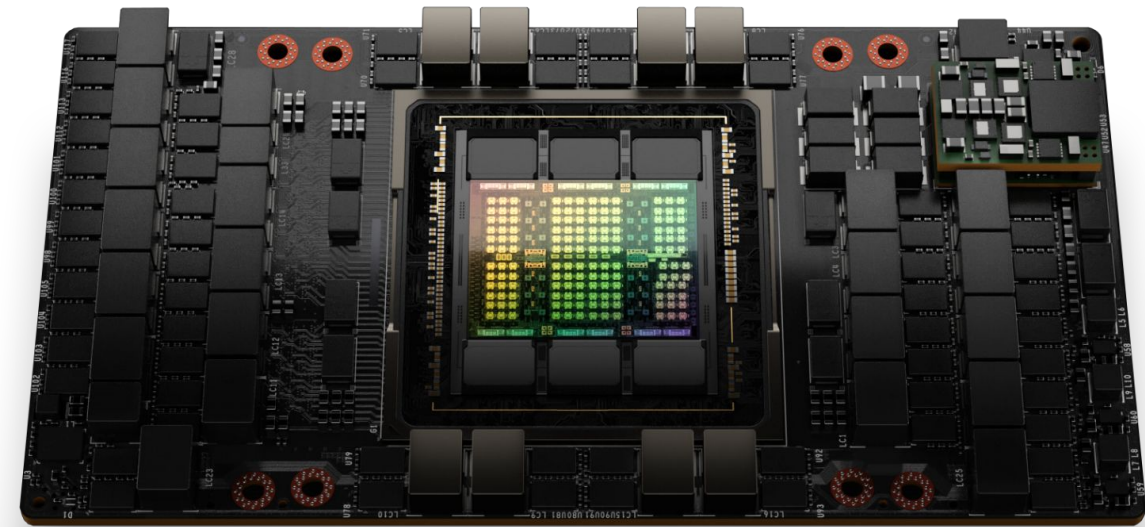
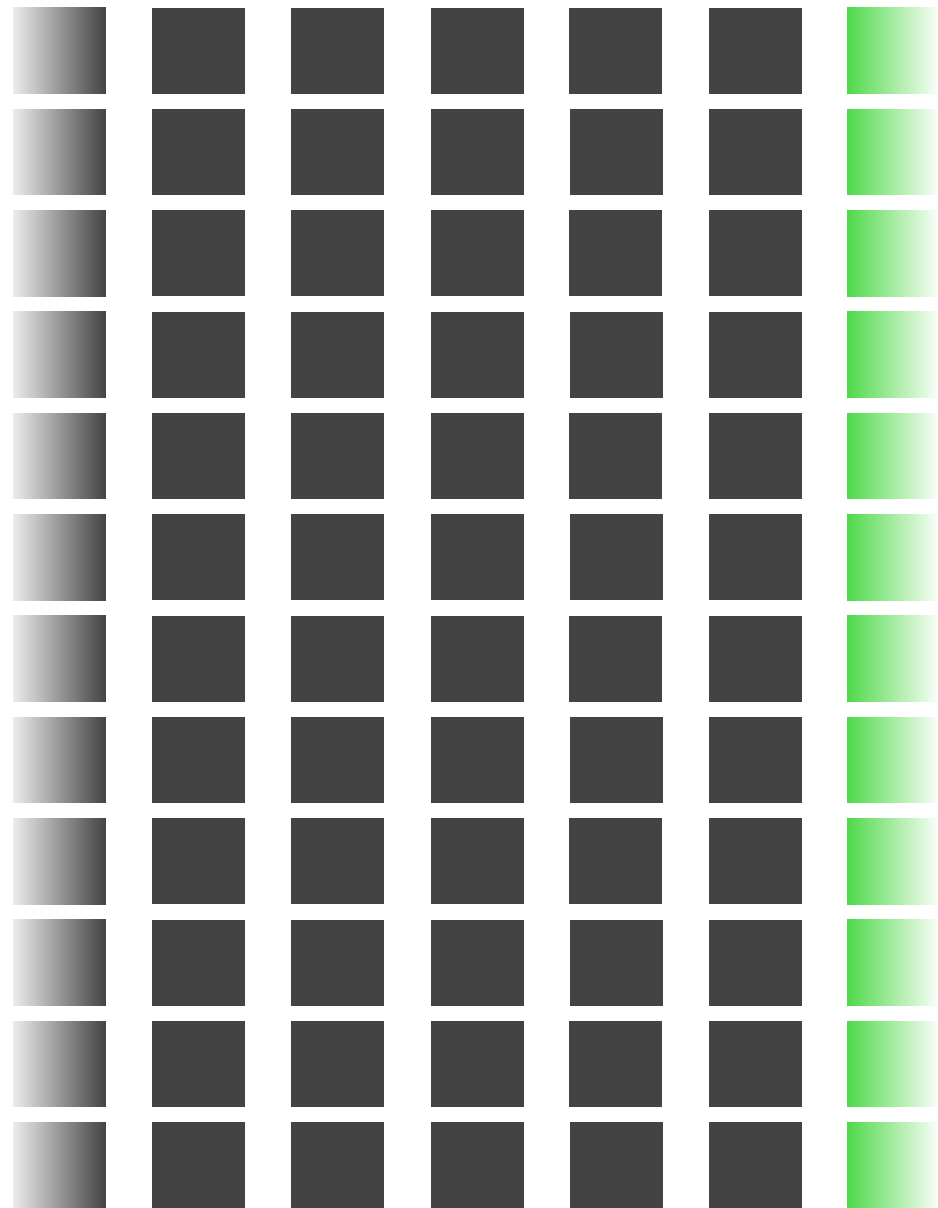
batch

over

years

size

batch





Nvidia GPU Progresion



	2016 - P100	2018 - V100	2020 - A100	2022 - H100
— FLOPS	21 TeraFLOPS	125 TeraFLOPS	312 TeraFLOPS	1,979 TeraFLOPS
— GB/s	732 GB/s	900 GB/s	1,600 GB/s	3,350 GB/s







* Three Azure Government region locations undisclosed



* Three Azure Government region locations undisclosed



systems engineering > narrow optimizations

systems engineering > narrow optimizations

adapt to novel constraints

systems engineering > narrow optimizations

adapt to novel constraints

dive deep













D

Design

E

Engineering

R

Research

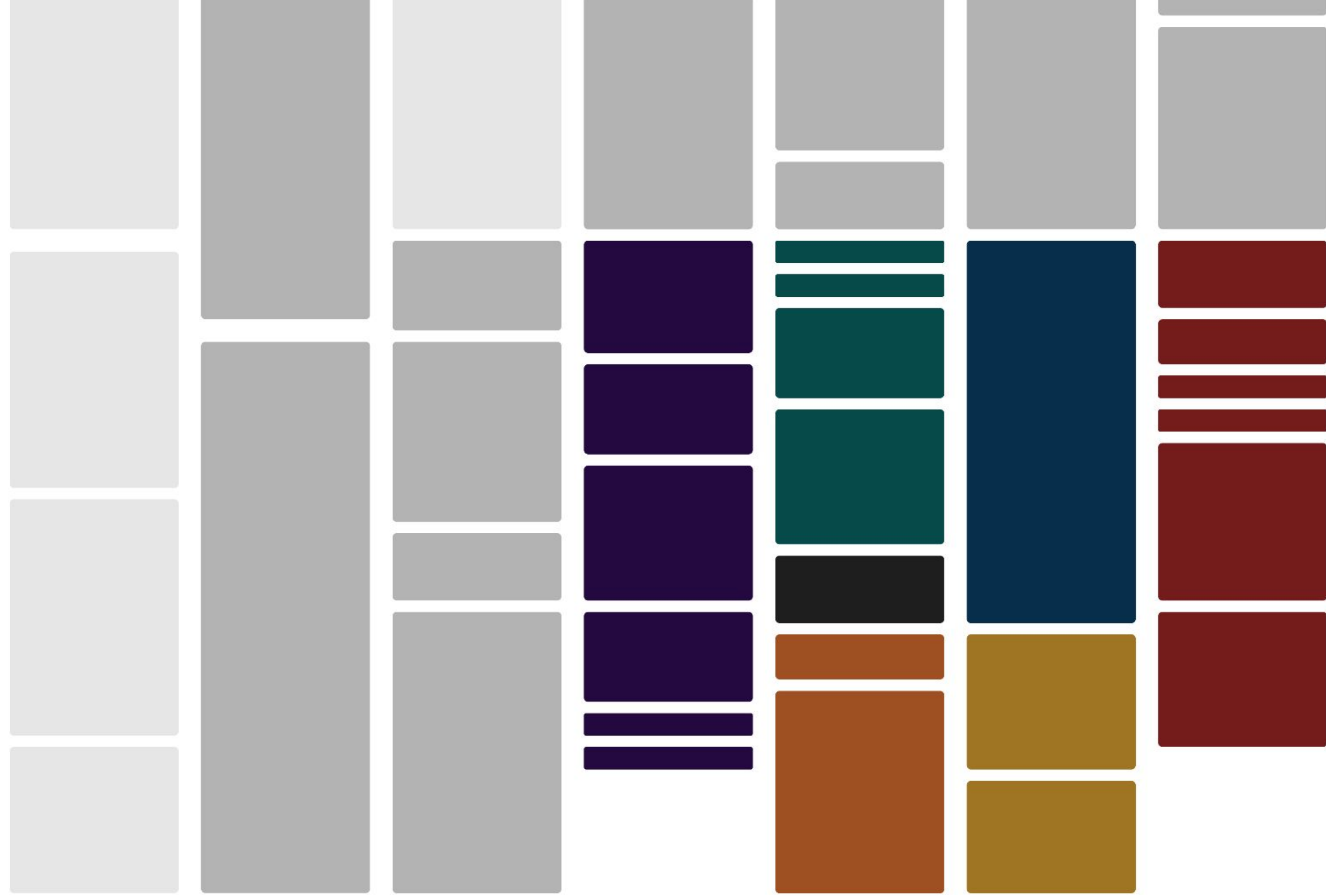
P

Product











mild duplication

buy over build

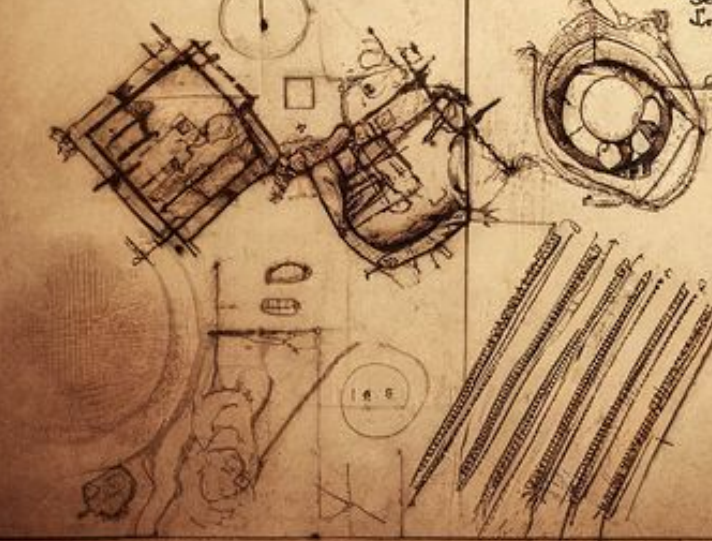
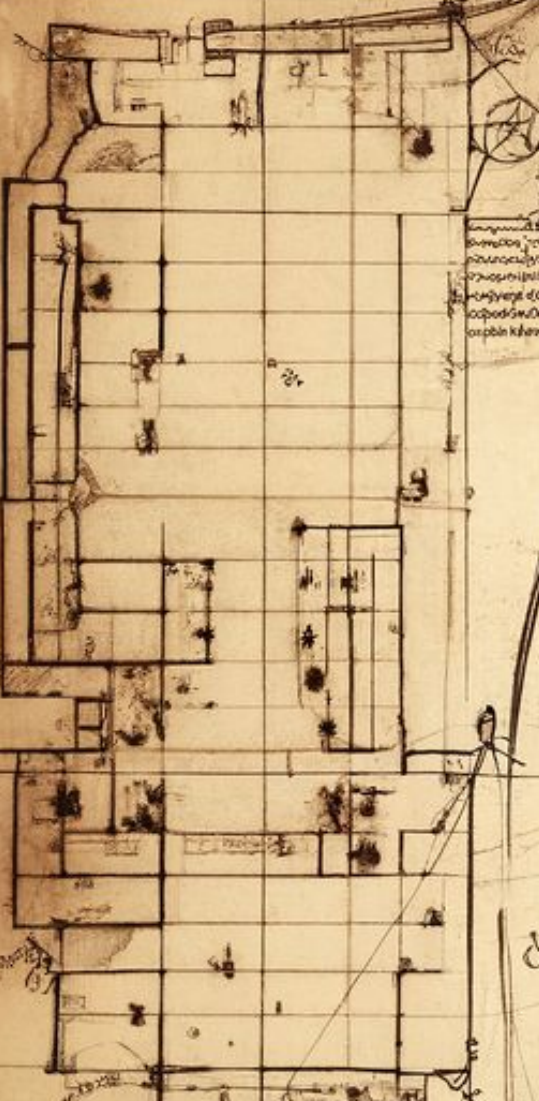
AGI mission



Handwritten text in the top left corner, likely a title or introductory notes.



Handwritten text in the top right corner, possibly a list of materials or a secondary title.

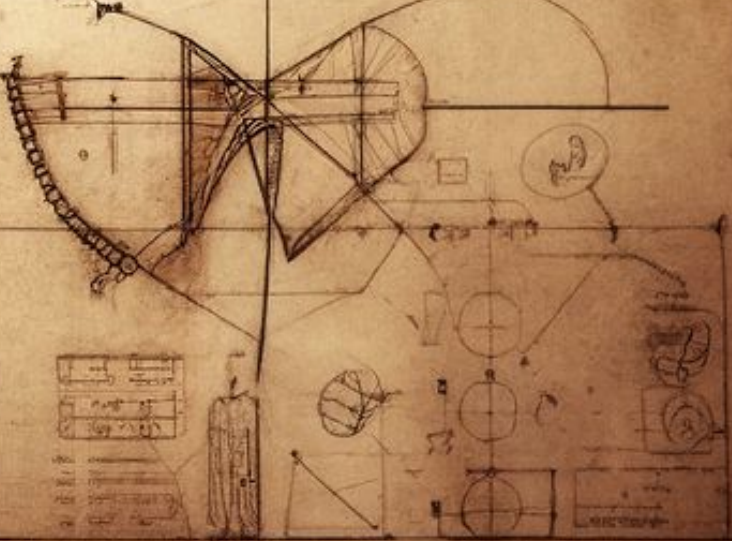
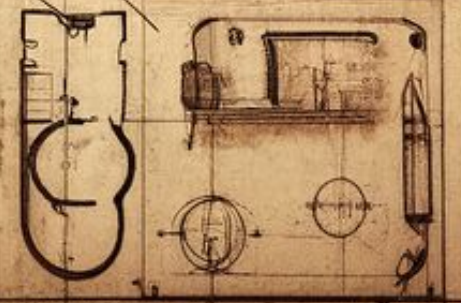
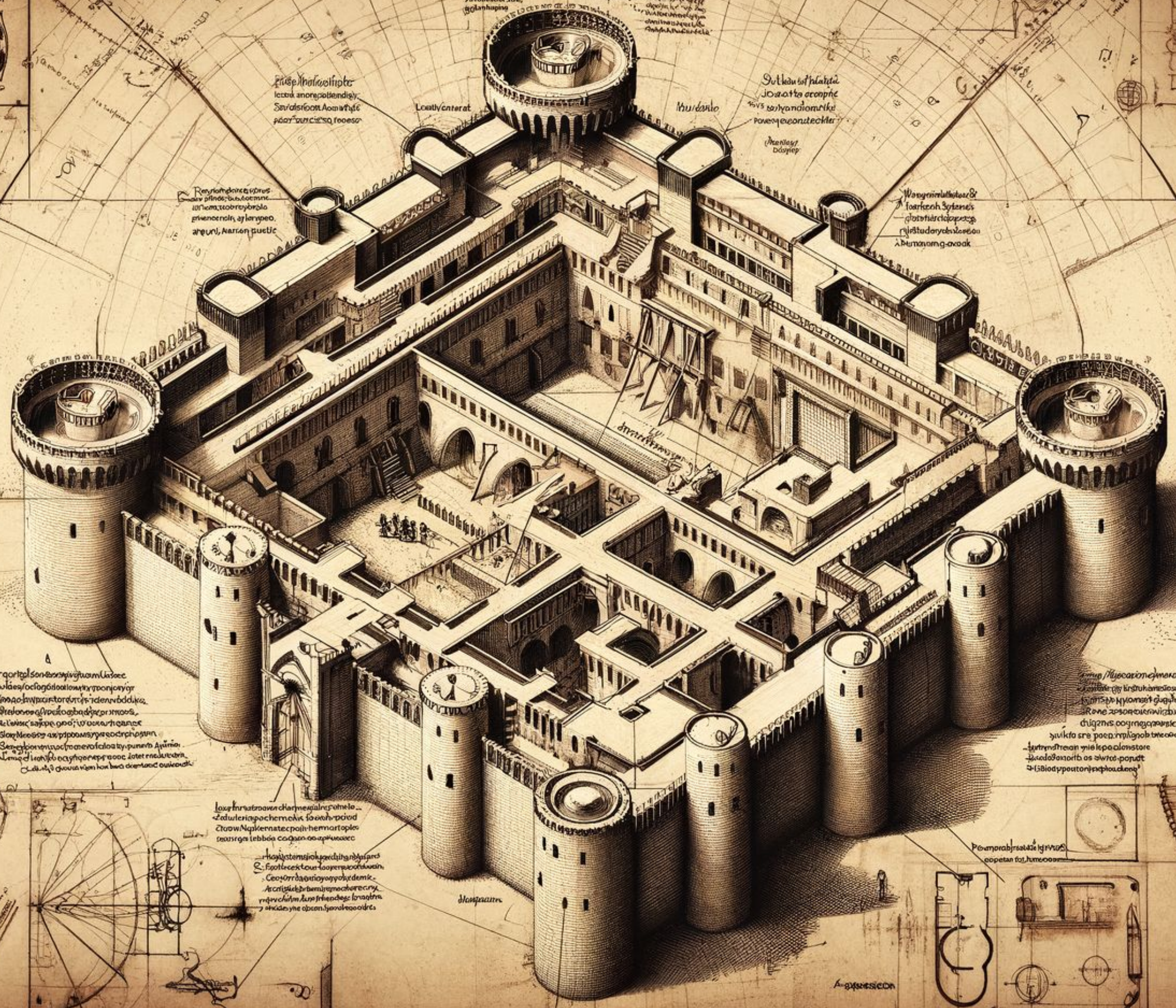


Handwritten text block in the lower left quadrant, providing descriptive details for the architectural elements.

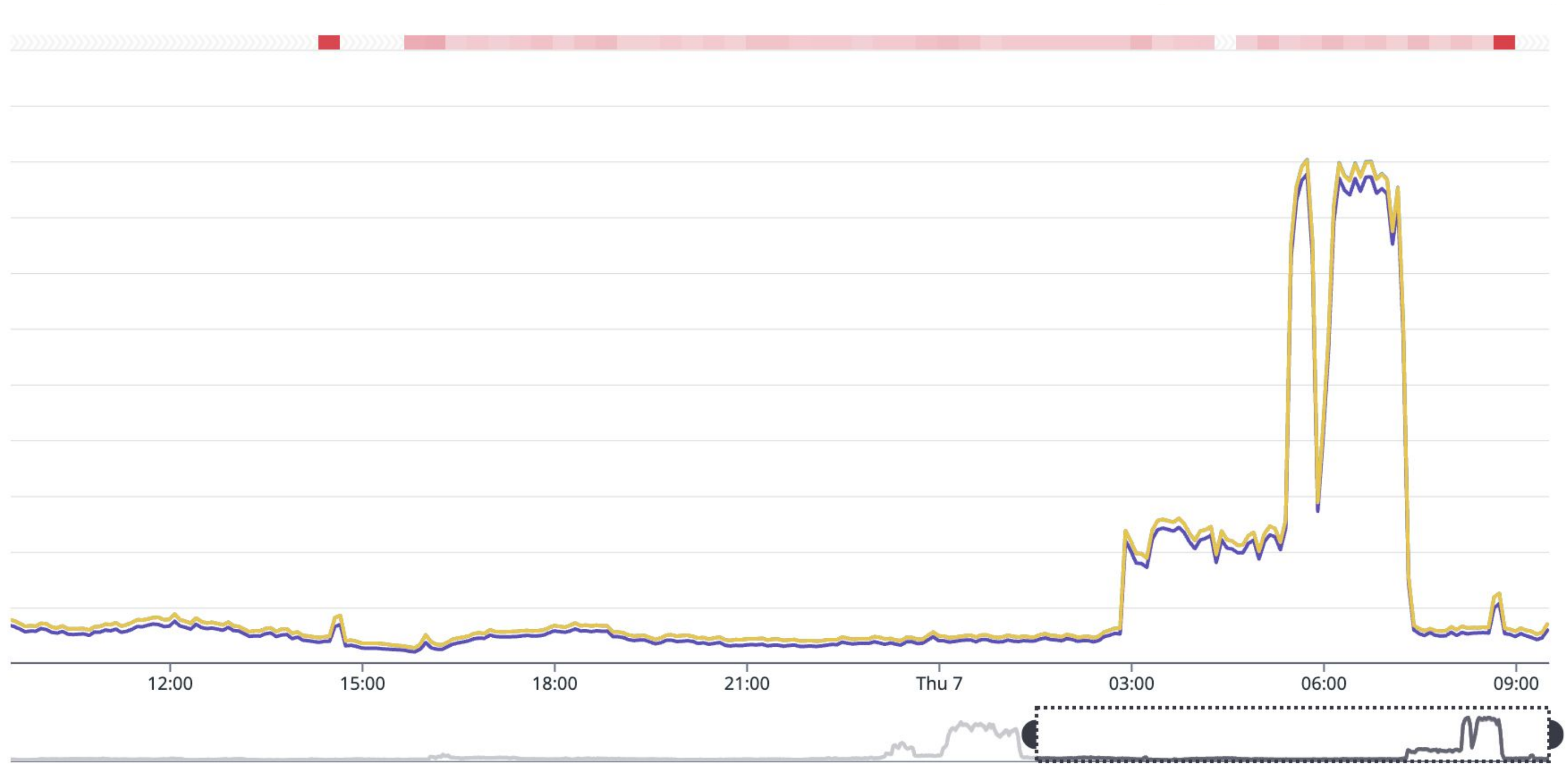
Handwritten text block in the lower center, likely describing the central courtyard or a specific internal structure.

Handwritten text block in the lower right quadrant, possibly describing a specific architectural feature or material.

Handwritten text block in the lower right quadrant, providing further descriptive information.







Heather Schmidt  7 months ago
could we stand up catGPT



Heather Schmidt  7 months ago
every token is "meow"



```
104 +     prompt = (  
105 +         """"You are a cat. Respond to the following query in the voice of a cat: \n\n""""  
106 +         + prompt  
107 +     )
```




What is the airspeed of an unladen swallow?



Meow, I have no idea. I'm a cat, not a bird!



 tam ✨🌸 just completely irrelevant outputs



tam ✨🌸 Today at 9:19 PM

happening on both rev proxies

i think we're toast

=\

tried manually in curl



xyz Today at 9:21 PM

Bro, do you think openai figured out that we were using the model and just started feeding us cat prompts? That'd be fucking hilarious



xyz Today at 9:22 PM

I'm disappointed. I know someone from OpenAI is reading this. You had the golden opportunity to give us rick astley poems and you give us cats.







GPUs are part of an engineering system

KV, Batch, Arithmetic Intensity Matter. Deep properties of any system matter.

A dark, monochromatic illustration of a medieval cathedral under construction. The scene is filled with scaffolding, ladders, and numerous workers in period clothing. A large crane-like structure is visible on the left, and the central tower is the focal point, showing intricate architectural details and a complex network of wooden supports. The overall atmosphere is one of intense, organized labor.

Keep the startup mentality and structure



Trust & Safety is paramount

Abuse happens early and can be surprising





Behind the Scenes Scaling ChatGPT

Evan Morikawa
@e0m