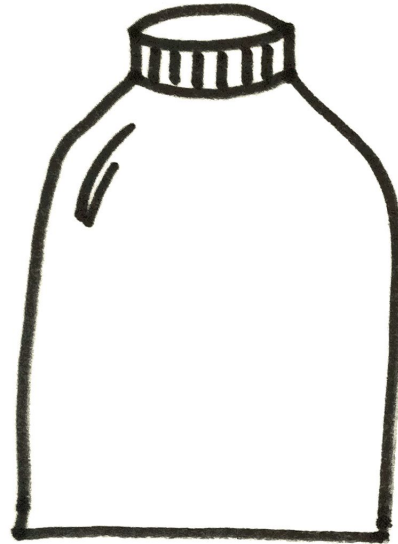


Filling the jar of impact and trust as a Principal Engineer

Nayana Shetty
Principal Engineer
The LEGO Group



The story of a large mayonnaise jar



Is the jar
full?



now?



and now?



Initiatives and their priorities



Some Context



QA
Lead



Tech
Lead



Principal
Engineer



Who am I

Nayana Shetty
she/her
Principal Engineer
The LEGO Group
Marketing and Channels Technology



The LEGO Group at a glance

Family-owned

Danish company
founded in



The LEGO name

comes from 'LEg GOdt'
meaning
'play well'



#1

Reputable
Brand



Source: RepTrak* 2023

111
countries



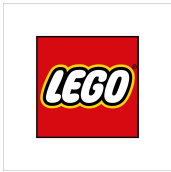
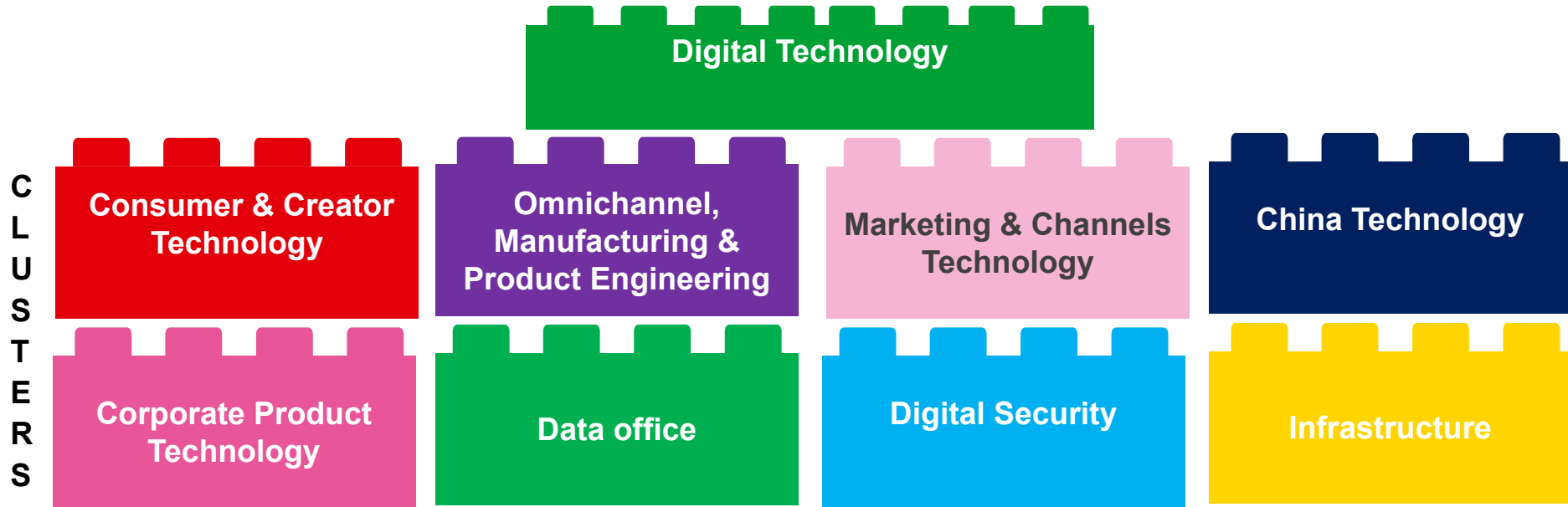
27,300+
colleagues



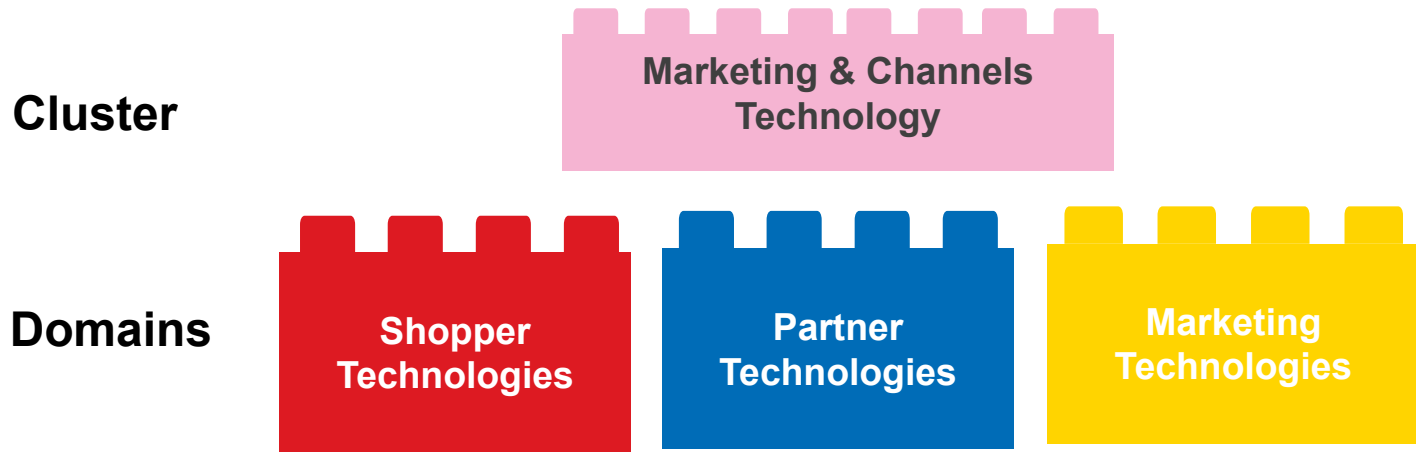
25% of profits
to the LEGO Foundation



Digital Technology in a glance



Marketing and Channels Technology in a glace



**Not a police
officer**

**Not a
wizard**



The explorer...



The explorer...



In this talk:

**6 key
takeaways**

**1.
Build trust
before you
can create big
impact**



**2.
Develop
empathy wider**



**3.
Rely on your
leader**



**4.
Learn to use
the trust you
built**



**5.
Nurture your
support
network**



**6.
Reprioritise for
impact when it
feels right**



In this talk:

**How to
identify
Rocks,
pebbles and
sand**



Takeaway

1

1.
**Build trust
before you
can create big
impact**



2.
Develop
empathy wider



3.
Rely on your
leader



4.
Learn to use
the trust you
built



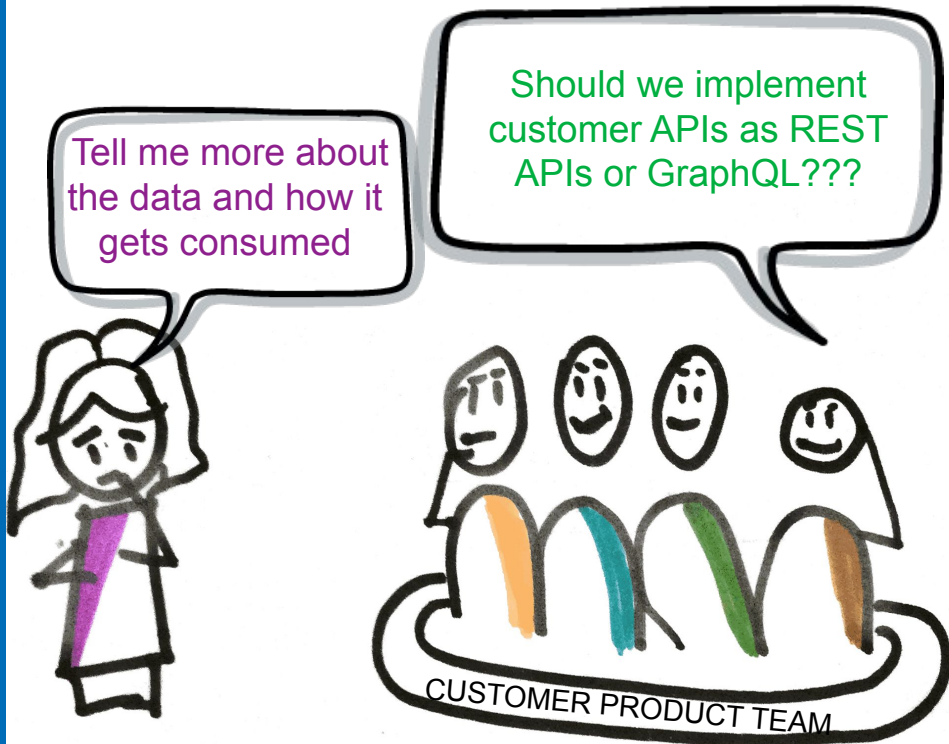
5.
Nurture your
support
network



6.
Reprioritise for
impact when it
feels right



Spend time with the Product teams



SAND ??..

IMPACT



TRUST



Spend time working with Senior Directors



Spend time building communities

Let us create a
graphql community



We would like to
share our learnings
there too



Takeaway 2

1.
Build trust
before you
can create big
impact



2.
Develop
empathy wider



3.
Rely on your
leader



4.
Learn to use
the trust you
built



5.
Nurture your
support
network



6.
Reprioritise for
impact when it
feels right



**Spend time
listening to
feedback on
the ground**



Spend time diving deep into services in product teams



PEBBLE ??..

IMPACT



TRUST



Takeaway

3

1.
Build trust
before you
can create big
impact



2.
Develop
empathy wider



3.
Rely on your
leader



4.
Learn to use
the trust you
built



5.
Nurture your
support
network



6.
Reprioritise for
impact when it
feels right



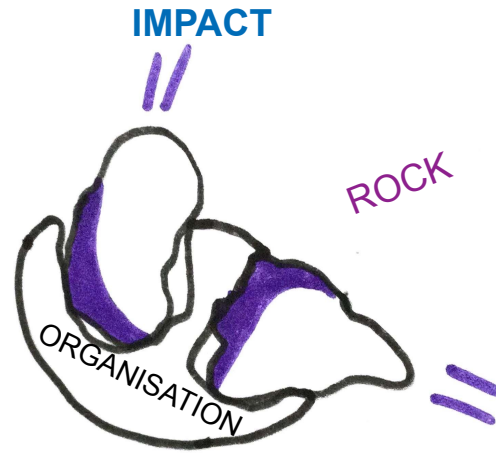
Ask your leader for that first big initiative



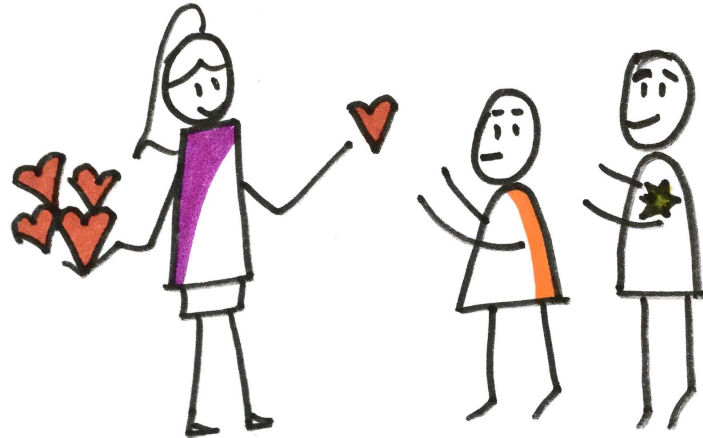
Ask your leader for that first big initiative



ROCK ??..



TRUST



Takeaway

4

1.
Build trust
before you
can create big
impact



2.
Develop
empathy wider



3.
Rely on your
leader



4.
Learn to use
the trust you
built



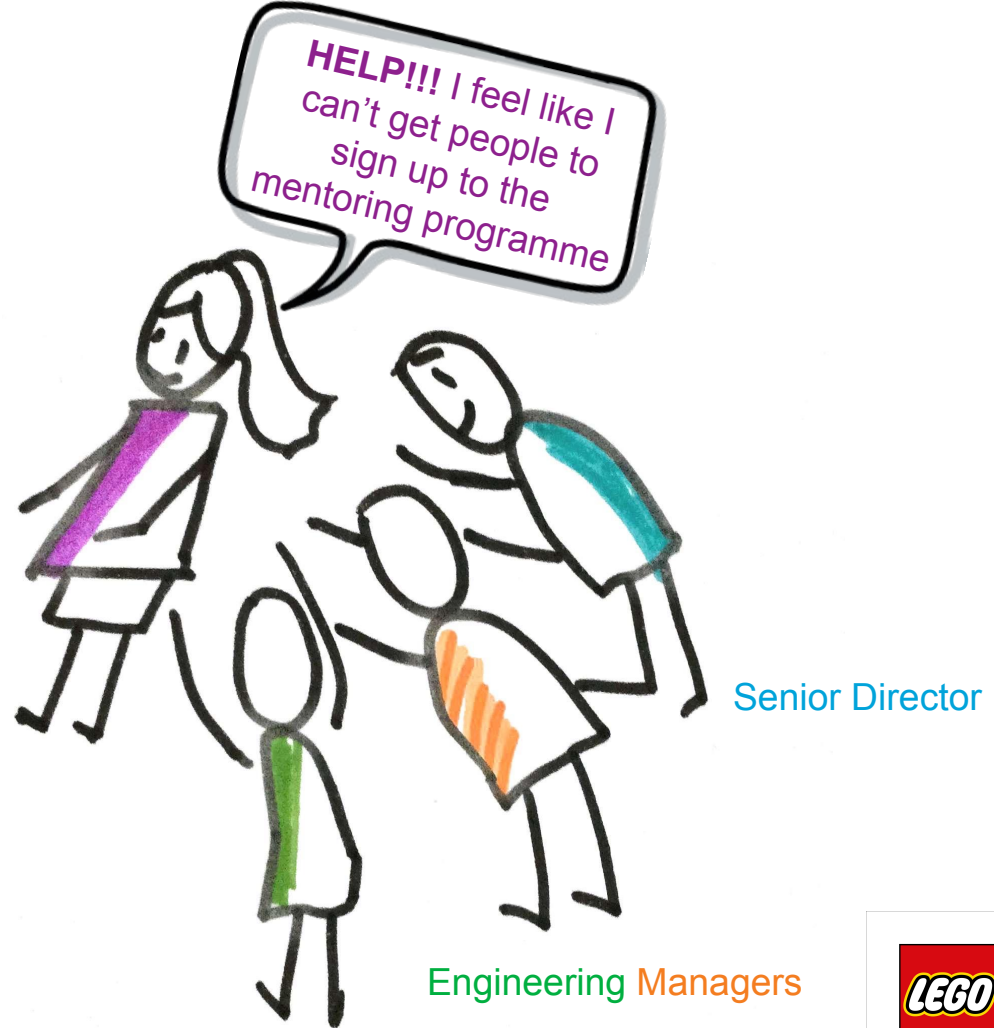
5.
Nurture your
support
network



6.
Reprioritise for
impact when it
feels right



Lean on your allies as a force multiplier



Takeaway 5

1.
Build trust
before you
can create big
impact



2.
Develop
empathy wider



3.
Rely on your
leader



4.
Learn to use
the trust you
built



5.
**Nurture your
support
network**



6.
Reprioritise for
impact when it
feels right



Use other Principal Engineers as your support network

Hi, looks like the VPs in
your area are not happy
with the single identity
tech strategy



The strategy is right for
the LEGO Group, let us
try talking to them



Takeaway 6

1.
Build trust
before you
can create big
impact



2.
Develop
empathy wider



3.
Rely on your
leader



4.
Learn to use
the trust you
built



5.
Nurture your
support
network



6.
Reprioritise for
impact when it
feels right



Delegation

Can you come up with a tech proposal to deploy containers for B2B domain??

Sure!! it is a great opportunity for me to grow



What am I currently work on



SAND

PEBBLE

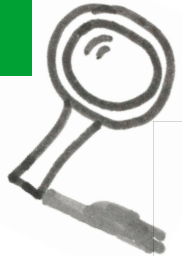
ROCK

Open Questions

How does **delegation work** when you can only influence without authority?



How to create **transparency** for initiatives you get involved in?



Summary

1.
Build trust
before you
can create big
impact



2.
Develop
empathy wider



3.
Rely on your
leader



4.
Learn to use
the trust you
built



5.
Nurture your
support
network



6.
Reprioritise for
impact when it
feels right



Takeaway

1

1.
**Build trust
before you
can create big
impact**



2.
Develop
empathy wider



3.
Rely on your
leader



4.
Learn to use
the trust you
built



5.
Nurture your
support
network



6.
Reprioritise for
impact when it
feels right



Takeaway 2

1.
Build trust
before you
can create big
impact



2.
Develop
empathy wider



3.
Rely on your
leader



4.
Learn to use
the trust you
built



5.
Nurture your
support
network



6.
Reprioritise for
impact when it
feels right



Takeaway

3

1.
Build trust
before you
can create big
impact



2.
Develop
empathy wider



3.
Rely on your
leader



4.
Learn to use
the trust you
built



5.
Nurture your
support
network



6.
Reprioritise for
impact when it
feels right



Takeaway

4

1.
Build trust
before you
can create big
impact



2.
Develop
empathy wider



3.
Rely on your
leader



4.
Learn to use
the trust you
built



5.
Nurture your
support
network



6.
Reprioritise for
impact when it
feels right



Takeaway 5

1.
Build trust
before you
can create big
impact



2.
Develop
empathy wider



3.
Rely on your
leader



4.
Learn to use
the trust you
built



5.
**Nurture your
support
network**



6.
Reprioritise for
impact when it
feels right



Takeaway 6

1.
Build trust
before you
can create big
impact



2.
Develop
empathy wider



3.
Rely on your
leader



4.
Learn to use
the trust you
built



5.
Nurture your
support
network



6.
Reprioritise for
impact when it
feels right



Summary

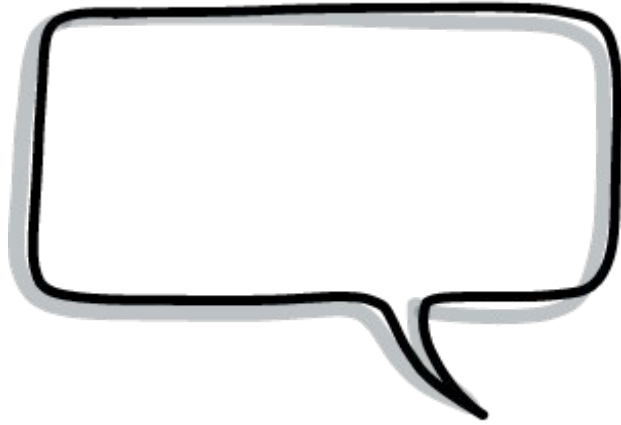


Thank You...



Thank You...





001 LEGO White

HEX #F6F6F6
RGB 246, 246, 246
CMYK 4, 3, 3, 0
RAL 9010
PMS Cool Gray 1 C
NCS 0601-G34Y

024 LEGO Bright Yellow

HEX #FFD400
RGB 255, 212, 0
CMYK 0, 15, 100, 0
RAL 1023
PMS 109 C
NCS 0580-Y10R

106 LEGO Bright Orange

HEX #F47D20
RGB 244, 125, 32
CMYK 0, 63, 100, 0
RAL 2003
PMS 1505 C
NCS 0580-Y50R

021 LEGO Bright Red

HEX #DD1A22
RGB 221, 26, 34
CMYK 0, 100, 100, 7
RAL 3020
PMS 485 C
NCS 0585-Y90R

222 LEGO Light Purple

HEX #F6ADCD
RGB 246, 173, 205
CMYK 0, 40, 0, 0
RAL 330-80-20
PMS 244 C
NCS 1040-R30B

268 LEGO Medium Lilac

HEX #4C2F92
RGB 76, 47, 146
CMYK 88, 100, 0, 0
RAL 300-30-40
PMS 268 C
NCS 4052-R60B

023 LEGO Bright Blue

HEX #006CB7
RGB 0, 108, 183
CMYK 100, 55, 0, 0
RAL 5017
PMS 300 C
NCS 3065-R90B

321 LEGO Dark Azur

HEX #00A3DA
RGB 0, 163, 218
CMYK 89, 12, 4, 0
RAL 230-60-40
PMS 299 C
NCS 2055-B10G

037 LEGO Bright Green

HEX #00AF4D
RGB 0, 175, 77

026 LEGO Black

HEX #000000
RGB 0, 0, 0

